

## Product datasheet for **AP13314PU-N**

### APH1A (N-term) Rabbit Polyclonal Antibody

#### Product data:

Product Type:	Primary Antibodies
Applications:	IHC, WB
Recommended Dilution:	ELISA: 1/1,000. Western blotting: 1/100 - 1/500. Immunohistochemistry: 1/50 - 1/100.
Reactivity:	Human
Host:	Rabbit
Isotype:	Ig
Clonality:	Polyclonal
Immunogen:	This antibody is generated from rabbits immunized with a KLH conjugated synthetic peptide selected from the N-terminal region of human APH1.
Specificity:	This antibody reacts to APH1.
Formulation:	PBS with 0.09% (W/V) sodium azide State: Purified State: Liquid purified Ig
Concentration:	lot specific
Purification:	Protein G column, eluted with high and low pH buffers and neutralized immediately, followed by dialysis against PBS
Conjugation:	Unconjugated
Storage:	Store the antibody undiluted at 2-8°C for one month or (in aliquots) at -20°C for longer. Avoid repeated freezing and thawing.
Stability:	Shelf life: one year from despatch.
Gene Name:	aph-1 homolog A, gamma-secretase subunit
Database Link:	<a href="#">Entrez Gene 51107 Human</a> <a href="#">Q96BI3</a>



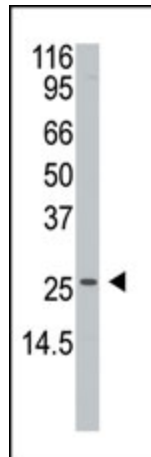
[View online »](#)

**Background:**

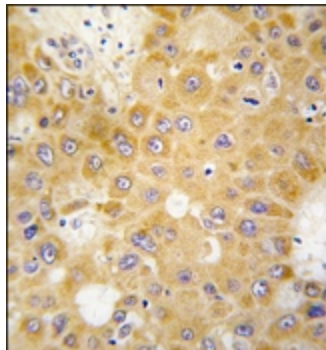
APH1 is an essential subunit of the gamma-secretase complex, an endoprotease complex that catalyzes the intramembrane cleavage of integral proteins such as Notch receptors and APP (beta-amyloid precursor protein). The gamma-secretase complex is minimally composed of a presenilin homodimer (PSEN1 or PSEN2), nicastrin (NCSTN), APH1 (APH1A or APH1B) and PEN2, although other components may exist. APH1 probably represents a stabilizing cofactor for the presenilin homodimer that promotes the formation of a stable complex.

**Synonyms:**

Gamma-secretase subunit APH-1A, APH-1A, Aph-1 alpha, PSF, Presenilin-stabilization factor, CGI-78, aph-1

**Product images:**

Western blot analysis of anti-rified Pab.



Formalin-fixed and paraffin-embedded human hepatocarcinoma tissue reacted with APH1 antibody (N-term), which was peroxidase-conjugated to the secondary antibody, followed by DAB staining.