

Product datasheet for **AP13303PU-N**

Parp3 (C-term) Rabbit Polyclonal Antibody

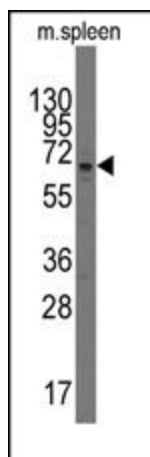
Product data:

Product Type:	Primary Antibodies
Applications:	WB
Recommended Dilution:	ELISA: 1/1,000. Western blotting: 1/50 - 1/100.
Reactivity:	Human, Mouse
Host:	Rabbit
Isotype:	Ig
Clonality:	Polyclonal
Immunogen:	This antibody is generated from rabbits immunized with a KLH conjugated synthetic peptide selected from the C-terminal region of mouse PARP3.
Specificity:	This antibody reacts to PARP3.
Formulation:	PBS with 0.09% (W/V) sodium azide State: Purified State: Liquid purified Ig
Concentration:	lot specific
Purification:	Prepared by Saturated Ammonium Sulfate (SAS) precipitation followed by dialysis against PBS
Conjugation:	Unconjugated
Storage:	Store the antibody undiluted at 2-8°C for one month or (in aliquots) at -20°C for longer. Avoid repeated freezing and thawing.
Stability:	Shelf life: one year from despatch.
Gene Name:	poly (ADP-ribose) polymerase family, member 3
Database Link:	Entrez Gene 235587 Mouse Q3ULW8
Background:	PARP3, poly(ADP-ribosyl)transferase 3, belongs to the PARP family. These enzymes modify nuclear proteins by poly-ADP-ribosylation, which is required for DNA repair, regulation of apoptosis, and maintenance of genomic stability. This protein is preferentially localized to the daughter centriole throughout the cell cycle.
Synonyms:	PARP-3, ADPRT3, ADPRT-3, ADPRTL3, IRT1



[View online »](#)

Product images:



Western blot analysis of anti-PARP3 Pab in mouse spleen tissue lysates (35ug/lane). PARP3 (arrow) was detected using the purified Pab (1:60 dilution).