

Product datasheet for **AP13301PU-N**

YB1 (YBX1) (N-term) Rabbit Polyclonal Antibody

Product data:

Product Type:	Primary Antibodies
Applications:	WB
Recommended Dilution:	ELISA: 1/1,000. Western blotting: 1/50 - 1/100.
Reactivity:	Human
Host:	Rabbit
Isotype:	Ig
Clonality:	Polyclonal
Immunogen:	This antibody is generated from rabbits immunized with a KLH conjugated synthetic peptide selected from the N-terminal region of human YBX1.
Specificity:	This antibody reacts to YB1 (YBX1).
Formulation:	PBS with 0.09% (W/V) sodium azide State: Purified State: Liquid purified Ig
Concentration:	lot specific
Purification:	Prepared by Saturated Ammonium Sulfate (SAS) precipitation followed by dialysis against PBS
Conjugation:	Unconjugated
Storage:	Store the antibody undiluted at 2-8°C for one month or (in aliquots) at -20°C for longer. Avoid repeated freezing and thawing.
Stability:	Shelf life: one year from despatch.
Gene Name:	Y-box binding protein 1
Database Link:	Entrez Gene 4904 Human P67809



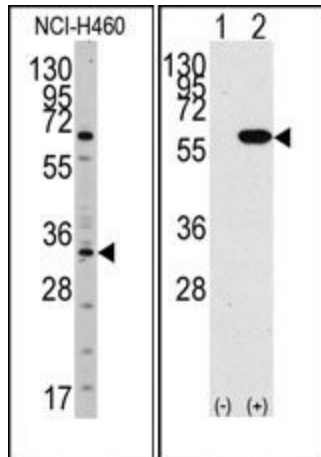
[View online »](#)

Background:

YBX1 binds to splice sites in pre-mRNA and regulates splice site selection. This protein binds and stabilizes cytoplasmic mRNA and contributes to the regulation of translation by modulating the interaction between the mRNA and eukaryotic initiation factors. It binds to promoters that contain a Y-box (5'-CTGATTGGCCAA-3'), such as HLA class II genes. It regulates the transcription of numerous genes and promotes separation of DNA strands that contain mismatches or are modified by cisplatin. It has endonucleolytic activity and can introduce nicks or breaks into double-stranded DNA (in vitro), and it may play a role in DNA repair.

Synonyms:

NSEP1, YB1, CBF-A, EFI-A

Product images:


(LEFT)Western blot analysis of anti-YBX1 Antibody (N-term) in NCI-H460 cell line lysates (35ug/lane).YBX1 (arrow) was detected using the purified Pab (1:60dilution). (RIGHT)Western blot analysis of YBX1 (arrow) using rabbit polyclonal YBX1 Antibody (N-term).293 cell lysates (2 ug/lane) either nontransfected (Lane 1) or transiently transfected with the YBX1 gene (Lane 2)