

Product datasheet for **AP13279PU-N**

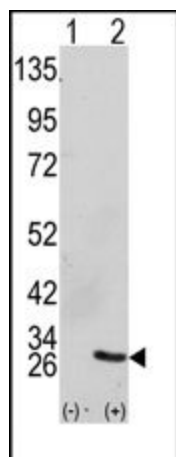
GRB2 Rabbit Polyclonal Antibody

Product data:

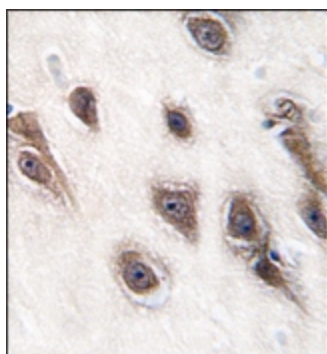
Product Type:	Primary Antibodies
Applications:	IHC, WB
Recommended Dilution:	ELISA: 1/1,000. Western blotting: 1/50 - 1/100. Immunohistochemistry: 1/50 - 1/100.
Reactivity:	Human
Host:	Rabbit
Isotype:	Ig
Clonality:	Polyclonal
Immunogen:	This antibody is generated from rabbits immunized with a KLH conjugated synthetic peptide selected from the center region of human GRB2.
Specificity:	This antibody reacts to GRB2.
Formulation:	PBS with 0.09% (W/V) sodium azide State: Purified State: Liquid purified Ig
Concentration:	lot specific
Purification:	Prepared by Saturated Ammonium Sulfate (SAS) precipitation followed by dialysis against PBS
Conjugation:	Unconjugated
Storage:	Store the antibody undiluted at 2-8°C for one month or (in aliquots) at -20°C for longer. Avoid repeated freezing and thawing.
Stability:	Shelf life: one year from despatch.
Gene Name:	growth factor receptor bound protein 2
Database Link:	Entrez Gene 2885 Human P62993
Background:	GRB2 binds the epidermal growth factor receptor and contains one SH2 domain and two SH3 domains. Its two SH3 domains direct complex formation with proline-rich regions of other proteins, and its SH2 domain binds tyrosine phosphorylated sequences.
Synonyms:	Growth factor receptor-bound protein 2



[View online »](#)

Product images:

Western blot analysis of GRB2 (arrow) using GRB2 Antibody (Center). 293 cell lysates (2 ug/lane) either nontransfected (Lane 1) or transiently transfected with the GRB2 gene (Lane 2)



Formalin-fixed and paraffin-embedded human brain tissue reacted with GRB2 antibody (Center), which was peroxidase-conjugated to the secondary antibody, followed by DAB staining.