

Product datasheet for **AP13273PU-N**

EDA (N-term) Rabbit Polyclonal Antibody

Product data:

Product Type:	Primary Antibodies
Applications:	IHC, WB
Recommended Dilution:	ELISA: 1/1,000. Western blotting: 1/50 - 1/100. Immunohistochemistry: 1/10 - 1/50.
Reactivity:	Human
Host:	Rabbit
Isotype:	Ig
Clonality:	Polyclonal
Immunogen:	This antibody is generated from rabbits immunized with a KLH conjugated synthetic peptide selected from the N-terminal region of human EDA.
Specificity:	This antibody reacts to EDA.
Formulation:	PBS with 0.09% (W/V) sodium azide State: Aff - Purified State: Liquid purified Ig
Concentration:	lot specific
Purification:	Protein A column, followed by peptide affinity purification
Conjugation:	Unconjugated
Storage:	Store the antibody undiluted at 2-8°C for one month or (in aliquots) at -20°C for longer. Avoid repeated freezing and thawing.
Stability:	Shelf life: one year from despatch.
Gene Name:	ectodysplasin A
Database Link:	Entrez Gene 1896 Human Q92838



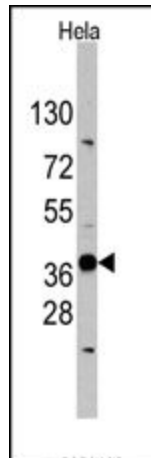
[View online »](#)

Background:

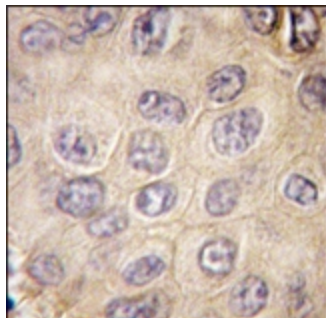
EDA is a type II membrane protein that can be cleaved by furin to produce a secreted form. This protein, which belongs to the tumor necrosis factor family, acts as a homotrimer and may be involved in cell-cell signaling during the development of ectodermal organs. Defects in the gene for EDA are a cause of ectodermal dysplasia, anhidrotic, which is also known as X-linked hypohidrotic ectodermal dysplasia.

Synonyms:

EDA, ED1, EDA2, HED, EDA1, XHED, XLHED, ED1-A1, ED1-A2, STHAGX1

Product images:

Western blot analysis of anti-EDA Antibody (N-term) in HeLa cell line lysates (35ug/lane). EDA (arrow) was detected using the purified Pab (1:60 dilution).



Formalin-fixed and paraffin-embedded human hepatocarcinoma tissue reacted with EDA antibody (N-term), which was peroxidase-conjugated to the secondary antibody, followed by DAB staining.