

Product datasheet for **AP13266PU-N**

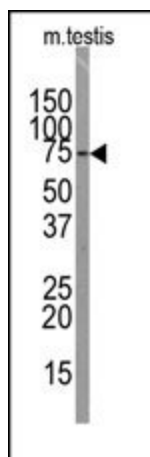
SOX30 (Center) Rabbit Polyclonal Antibody

Product data:

Product Type:	Primary Antibodies
Applications:	WB
Recommended Dilution:	ELISA: 1/1,000. Western blotting: 1/50 - 1/100.
Reactivity:	Human, Mouse
Host:	Rabbit
Isotype:	Ig
Clonality:	Polyclonal
Immunogen:	This antibody is generated from rabbits immunized with a KLH conjugated synthetic peptide selected from the Center region of human SOX30.
Specificity:	This antibody reacts to SOX30.
Formulation:	PBS with 0.09% (W/V) sodium azide State: Purified State: Liquid purified Ig
Concentration:	lot specific
Purification:	Prepared by Saturated Ammonium Sulfate (SAS) precipitation followed by dialysis against PBS
Conjugation:	Unconjugated
Storage:	Store the antibody undiluted at 2-8°C for one month or (in aliquots) at -20°C for longer. Avoid repeated freezing and thawing.
Stability:	Shelf life: one year from despatch.
Gene Name:	SRY-box 30
Database Link:	Entrez Gene 11063 Human O94993
Background:	SOX30 is a member of the SOX (SRY-related HMG-box) family of transcription factors involved in the regulation of embryonic development and in the determination of the cell fate. SOX30 may act as a transcriptional regulator after forming a protein complex with other proteins, and it may be involved in the differentiation of developing male germ cells.
Synonyms:	Transcription factor SOX-30, SRY-box 30



[View online »](#)

Product images:

Western blot analysis of anti-SOX30 Antibody (Center) in mouse testis tissue lysates (35ug/lane). SOX30 (arrow) was detected using the purified Pab (1:60 dilution).