

## Product datasheet for **AP13260PU-N**

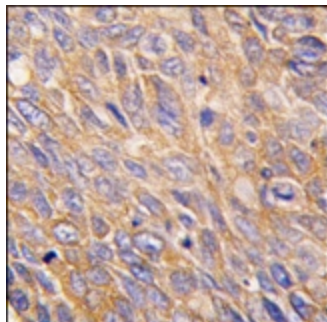
### TOB2 (N-term) Rabbit Polyclonal Antibody

#### Product data:

Product Type:	Primary Antibodies
Applications:	IHC
Recommended Dilution:	ELISA: 1/1,000. Immunohistochemistry: 1/50.
Reactivity:	Human
Host:	Rabbit
Isotype:	Ig
Clonality:	Polyclonal
Immunogen:	This antibody is generated from rabbits immunized with a KLH conjugated synthetic peptide selected from the N-terminal region of human TOB2.
Specificity:	This antibody reacts to TOB2.
Formulation:	PBS with 0.09% (W/V) sodium azide State: Purified State: Liquid purified Ig
Concentration:	lot specific
Purification:	Protein A column, eluted with high and low pH buffers and neutralized immediately, followed by dialysis against PBS
Conjugation:	Unconjugated
Storage:	Store the antibody undiluted at 2-8°C for one month or (in aliquots) at -20°C for longer. Avoid repeated freezing and thawing.
Stability:	Shelf life: one year from despatch.
Gene Name:	transducer of ERBB2, 2
Database Link:	<a href="#">Entrez Gene 10766 Human Q14106</a>
Background:	TOB2 belongs to the TOB /BTG1 family of antiproliferative proteins, which are involved in the regulation of cell cycle progression.
Synonyms:	KIAA1663, TOB4, TROB2



[View online »](#)

**Product images:**

Formalin-fixed and paraffin-embedded human lung carcinoma tissue reacted with TOB2 antibody (N-term), which was peroxidase-conjugated to the secondary antibody, followed by DAB staining.