

Product datasheet for **AP13252PU-N**

CDC6 (N-term) Rabbit Polyclonal Antibody

Product data:

Product Type:	Primary Antibodies
Applications:	WB
Recommended Dilution:	ELISA: 1/1,000. Western blotting: 1/50 - 1/100.
Reactivity:	Human
Host:	Rabbit
Isotype:	Ig
Clonality:	Polyclonal
Immunogen:	This antibody is generated from rabbits immunized with a KLH conjugated synthetic peptide selected from the N-terminal region of human Cdc6.
Specificity:	This antibody reacts to Cdc6.
Formulation:	PBS with 0.09% (W/V) sodium azide State: Aff - Purified State: Liquid purified Ig
Concentration:	lot specific
Purification:	Protein A column, followed by peptide affinity purification
Conjugation:	Unconjugated
Storage:	Store the antibody undiluted at 2-8°C for one month or (in aliquots) at -20°C for longer. Avoid repeated freezing and thawing.
Stability:	Shelf life: one year from despatch.
Gene Name:	cell division cycle 6
Database Link:	Entrez Gene 990 Human Q99741



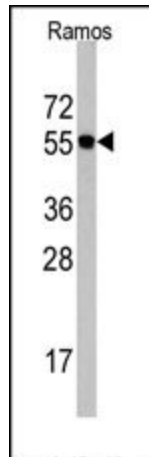
[View online »](#)

Background:

Human Cdc6 is highly similar to *Saccharomyces cerevisiae* Cdc6, a protein essential for the initiation of DNA replication. This protein functions as a regulator at the early steps of DNA replication. It localizes in cell nucleus during cell cycle G1, but translocates to the cytoplasm at the start of S phase. The subcellular translocation of this protein during cell cycle is regulated through its phosphorylation by Cdks. Transcription of this protein was reported to be regulated in response to mitogenic signals through transcriptional control mechanism involving E2F proteins.

Synonyms:

CDC18L, CDC6-related protein, p62(cdc6), HsCDC6, Cdc18-related protein, HsCdc18

Product images:

Western blot analysis of Cdc6 Antibody (N-term) in Ramos cell line lysates (35ug/lane). Cdc6 (arrow) was detected using the purified Pab (1:60 dilution).