

## Product datasheet for **AP13235PU-N**

### Sclerostin (SOST) (N-term) Rabbit Polyclonal Antibody

#### Product data:

Product Type:	Primary Antibodies
Applications:	IHC, WB
Recommended Dilution:	<b>ELISA:</b> 1/1,000. <b>Western blotting:</b> 1/1,000. <b>Immunohistochemistry:</b> 1/10-1/50.
Reactivity:	Human, Mouse
Host:	Rabbit
Isotype:	Ig
Clonality:	Polyclonal
Immunogen:	KLH conjugated synthetic peptide between 12-42 amino acids from the N-terminal region of Human SOST.
Specificity:	This antibody recognizes SOST.
Formulation:	PBS State: Purified State: Liquid purified IgG fraction Preservative: 0.09% (W/V) Sodium Azide
Concentration:	lot specific
Purification:	Protein A column, followed by peptide affinity purification
Conjugation:	Unconjugated
Storage:	Store undiluted at 2-8°C for one month or (in aliquots) at -20°C for longer. Avoid repeated freezing and thawing.
Stability:	Shelf life: one year from despatch.
Gene Name:	sclerostin
Database Link:	<a href="#">Entrez Gene 50964 Human Q9BQB4</a>



[View online »](#)

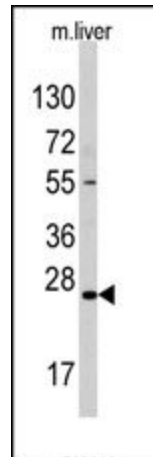
## Background:

Sclerostin is a secreted glycoprotein with a C-terminal cysteine knot-like (CTCK) domain and sequence similarity to the DAN (differential screening-selected gene aberrative in neuroblastoma) family of bone morphogenetic protein (BMP) antagonists. Loss-of-function mutations in this gene are associated with an autosomal-recessive disorder, sclerosteosis, which causes progressive bone overgrowth. A deletion downstream of this gene, which causes reduced sclerostin expression, is associated with a milder form of the disorder called van Buchem disease.

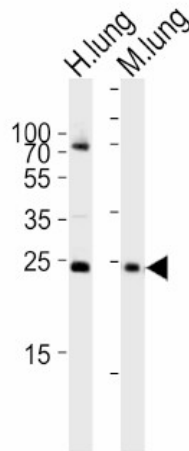
## Synonyms:

sclerosteosis; sclerostin; VBCH

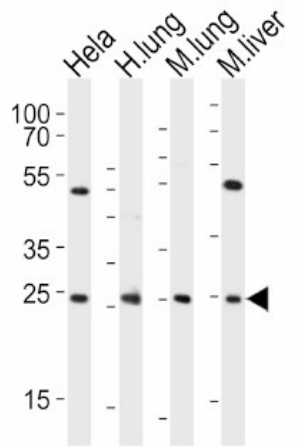
## Product images:



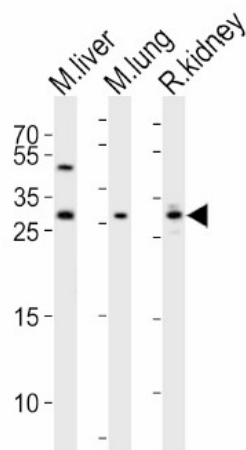
Western blot analysis of anti-SOST Antibody (N-term) Pab in mouse liver tissue lysates (35ug/lane). SOST (arrow) was detected using the purified Pab (1:60 dilution).



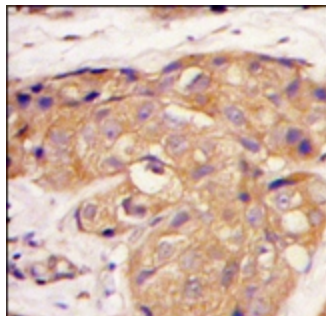
Western blot analysis of lysates from human lung, mouse lung tissue lysate (from left to right), using SOST Antibody (N-term) ( ). was diluted at 1:1000 at each lane. A goat anti-rabbit IgG H&L (HRP) at 1:10000 dilution was used as the secondary antibody. Lysates at 20ug per lane.



Western blot analysis of lysates from HeLa cell line, human lung, mouse lung, mouse liver tissue lysate (from left to right), using SOST Antibody (N-term). was diluted at 1:1000 at each lane. A goat anti-rabbit IgG H&L (HRP) at 1:10000 dilution was used as the secondary antibody. Lysates at 20ug per lane.



Western blot analysis of lysates from mouse liver, mouse lung, rat kidney tissue lysate (from left to right), using SOST Antibody (N-term). was diluted at 1:1000 at each lane. A goat anti-rabbit IgG H&L (HRP) at 1:10000 dilution was used as the secondary antibody. Lysates at 20ug per lane.



Formalin-fixed and paraffin-embedded human breast carcinoma tissue reacted with SOST antibody (N-term), which was peroxidase-conjugated to the secondary antibody, followed by DAB staining.