

Product datasheet for **AP13224PU-N**

CD82 (C-term) Rabbit Polyclonal Antibody

Product data:

Product Type:	Primary Antibodies
Applications:	IHC, WB
Recommended Dilution:	ELISA: 1/1,000. Western blotting: 1/100 - 1/500. Immunohistochemistry: 1/50 - 1/100.
Reactivity:	Human, Mouse
Host:	Rabbit
Isotype:	Ig
Clonality:	Polyclonal
Immunogen:	This antibody is generated from rabbits immunized with a KLH conjugated synthetic peptide selected from the C-terminal region of human ST6.
Specificity:	This antibody reacts to CD82 (ST6).
Formulation:	PBS with 0.09% (W/V) sodium azide State: Purified State: Liquid purified Ig
Concentration:	lot specific
Purification:	Protein G column, eluted with high and low pH buffers and neutralized immediately, followed by dialysis against PBS
Conjugation:	Unconjugated
Storage:	Store the antibody undiluted at 2-8°C for one month or (in aliquots) at -20°C for longer. Avoid repeated freezing and thawing.
Stability:	Shelf life: one year from despatch.
Gene Name:	CD82 molecule
Database Link:	Entrez Gene 3732 Human P27701



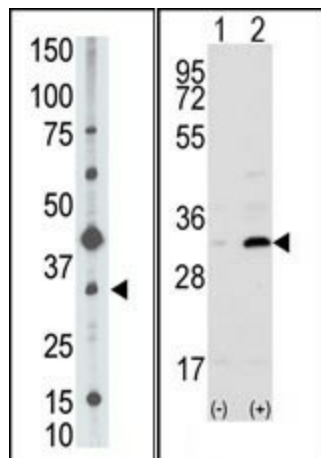
[View online »](#)

Background:

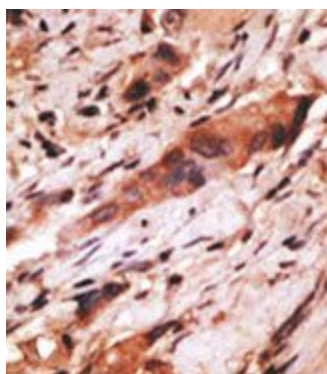
The ST6 metastasis suppressor gene product is a membrane glycoprotein that is a member of the transmembrane 4 superfamily. Expression has been shown to be downregulated in tumor progression of human cancers and can be activated by p53 through a consensus binding sequence in the promoter. Its expression and that of p53 are strongly correlated, and the loss of expression of these two proteins is associated with poor survival for prostate cancer patients.

Synonyms:

KAI1, SAR2, ST6, TSPAN27, C33 antigen, IA4, Kangai-1, Tetraspanin-27

Product images:


(LEFT) The anti-ST6 C-term Antibody is used in Western blot to detect ST6 in mouse liver lysate. (RIGHT) Western blot analysis of ST6 (arrow) using ST6 Antibody (C-term). 293 cell lysates (2 ug/lane) either nontransfected (Lane 1) or transiently transfected with the CD82 gene (Lane 2)



Formalin-fixed and paraffin-embedded human cancer tissue reacted with the primary antibody, which was peroxidase-conjugated to the secondary antibody, followed by AEC staining.