

Product datasheet for **AP13213PU-N**

RAI3 (GPC5A) (C-term) Rabbit Polyclonal Antibody

Product data:

Product Type:	Primary Antibodies
Applications:	WB
Recommended Dilution:	ELISA: 1/1,000. Western blotting: 1/100 - 1/500.
Reactivity:	Human
Host:	Rabbit
Isotype:	Ig
Clonality:	Polyclonal
Immunogen:	This antibody is generated from rabbits immunized with a KLH conjugated synthetic peptide selected from the C-terminal region of human RAI3.
Specificity:	This antibody reacts to RAI3.
Formulation:	PBS with 0.09% (W/V) sodium azide State: Purified State: Liquid purified Ig
Concentration:	lot specific
Purification:	Protein G column, eluted with high and low pH buffers and neutralized immediately, followed by dialysis against PBS
Conjugation:	Unconjugated
Storage:	Store the antibody undiluted at 2-8°C for one month or (in aliquots) at -20°C for longer. Avoid repeated freezing and thawing.
Stability:	Shelf life: one year from despatch.
Gene Name:	G protein-coupled receptor class C group 5 member A
Database Link:	Entrez Gene 9052 Human Q8NFJ5



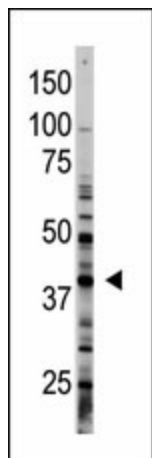
[View online »](#)

Background:

Retinoic acid plays a critical role in development, cellular growth, and differentiation. The specific function for the protein from this retinoic acid-induced gene has not yet been determined; however, it may play a role in embryonic development and epithelial cell differentiation. Rai3 is a member of the type 3 G protein-coupling receptor family, characterized by the signature 7-transmembrane domain motif. It may also be involved in interaction between retinoid acid and G protein signalling pathways.

Synonyms:

Retinoic acid-induced protein 3, G-protein coupled receptor C5A, PEIG-1, RAIG1, GPCR5A

Product images:

The anti-Rai3 C-term Antibody is used in Western blot to detect Rai3 in A375 lysate.