

Product datasheet for **AP13210PU-N**

Zinc finger MIZ domain containing protein 1 (ZMIZ1) (C-term) Rabbit Polyclonal Antibody

Product data:

Product Type:	Primary Antibodies
Applications:	IHC, WB
Recommended Dilution:	ELISA: 1/1,000. Western Blot: 1/50-1/100. Immunohistochemistry on Paraffin Sections: 1/50-1/100.
Reactivity:	Human
Host:	Rabbit
Isotype:	Ig
Clonality:	Polyclonal
Immunogen:	KLH conjugated synthetic peptide between 596~626 amino acids from the C-terminal region of Human RAI17
Specificity:	This antibody reacts to RAI17.
Formulation:	PBS with 0.09% (W/V) Sodium Azide as preservative State: Purified State: Liquid purified Ig fraction
Concentration:	lot specific
Purification:	Protein G Chromatography, eluted with high and low pH buffers and neutralized immediately, followed by dialysis against PBS
Conjugation:	Unconjugated
Storage:	Store undiluted at 2-8°C for one month or (in aliquots) at -20°C for longer. Avoid repeated freezing and thawing.
Stability:	Shelf life: one year from despatch.
Gene Name:	zinc finger MIZ-type containing 1
Database Link:	Entrez Gene 57178 Human Q9ULJ6



[View online »](#)

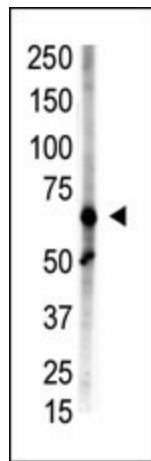
Background:

Retinoic acid plays a critical role in development, cellular growth, and differentiation and induces the expression of a variety of genes. RAI17 expression is induced by retinoic acid and is predominantly expressed in heart, brain and ovaries. Within brain, highest expression is in amygdala. The deduced 1,067-amino acid protein contains an MSX-interacting zinc finger (MIZ) domain, a nuclear localization signal sequence, and 2 proline-rich regions. A strong intrinsic transactivation domain is identified in the C-terminal proline-rich region. RAI17 expression is detected in various cancer cell lines. RAI17 colocalizes with endogenous androgen receptor (AR) in the nuclei of prostate epithelial cells from human tissue samples. In human prostate cancer cells, RAI17 increases the transcriptional activity of AR. Studies using sumoylation-deficient AR mutants suggest that the increase of AR activity by RAI17 is dependent upon receptor sumoylation.

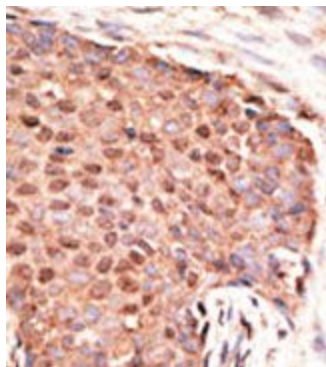
Synonyms:

KIAA1224, ZIMP10

Product images:



Western blot using ZMIZ1 / RAI17 Antibody (C-term) to detect Rai17 in Placenta lysate.



Formalin-fixed and paraffin-embedded human cancer tissue reacted with the primary antibody, which was peroxidase-conjugated to the secondary antibody, followed by AEC staining.