

Product datasheet for **AP13205PU-N**

Presenilin 1 (PSEN1) (C-term) Rabbit Polyclonal Antibody

Product data:

Product Type:	Primary Antibodies
Applications:	ELISA, IHC, WB
Recommended Dilution:	ELISA: 1/1,000. Western blot: 1/100 - 1/500. Immunohistochemistry on paraffin sections: 1/50 - 1/100.
Reactivity:	Human, Mouse
Host:	Rabbit
Isotype:	Ig
Clonality:	Polyclonal
Immunogen:	This antibody is generated from rabbits immunized with a KLH conjugated synthetic peptide selected from the C-terminal region of human PSEN1.
Specificity:	This antibody reacts to Presenilin 1 (PSEN1).
Formulation:	PBS with 0.09% (W/V) sodium azide State: Purified State: Liquid purified Ig fraction
Concentration:	lot specific
Purification:	Protein G column, eluted with high and low pH buffers and neutralized immediately, followed by dialysis against PBS
Conjugation:	Unconjugated
Storage:	Store the antibody undiluted at 2-8°C for one month or (in aliquots) at -20°C for longer. Avoid repeated freezing and thawing.
Stability:	Shelf life: one year from despatch.
Gene Name:	presenilin 1
Database Link:	Entrez Gene 5663 Human P49768



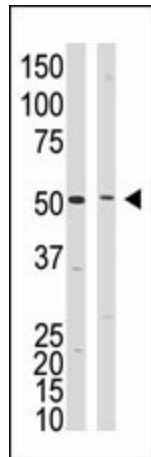
[View online »](#)

Background:

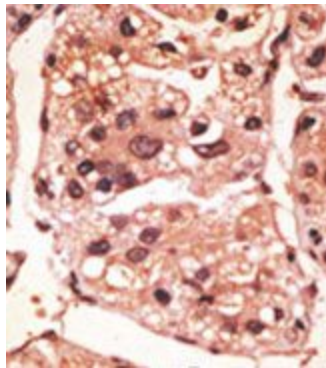
Alzheimer's disease (AD) patients with an inherited form of the disease carry mutations in the presenilin proteins (PSEN1; PSEN2) or the amyloid precursor protein (APP). These disease-linked mutations result in increased production of the longer form of amyloid-beta (main component of amyloid deposits found in AD brains). Presenilins are postulated to regulate APP processing through their effects on gamma-secretase, an enzyme that cleaves APP. Also, it is thought that the presenilins are involved in the cleavage of the Notch receptor, such that they either directly regulate gamma-secretase activity or themselves are protease enzymes.

Synonyms:

Presenilin 1, PSEN1, PS1, AD3, Alzheimer Disease 3, PS-1, PSNL1, AF3, FAD, S182

Product images:

The anti-PSEN1 C-term Antibody is used in Western blot to detect PSEN1 in mouse kidney tissue lysate (lane 1) and HL60 cell lysate (lane 2) lysate.



Formalin-fixed and paraffin-embedded human cancer tissue reacted with the primary antibody, which was peroxidase-conjugated to the secondary antibody, followed by DAB staining.