

Product datasheet for **AP13203PU-N**

CREB3L1 (C-term) Rabbit Polyclonal Antibody

Product data:

Product Type:	Primary Antibodies
Applications:	IHC, WB
Recommended Dilution:	ELISA: 1/1,000. Western blotting: 1/100 - 1/500. Immunohistochemistry: 1/50 - 1/100.
Reactivity:	Human
Host:	Rabbit
Isotype:	Ig
Clonality:	Polyclonal
Immunogen:	This antibody is generated from rabbits immunized with a KLH conjugated synthetic peptide between 490~519 amino acids from the C-terminal region of Human OASIS.
Specificity:	This antibody detects OASIS at C-term.
Formulation:	PBS with 0.09% (W/V) Sodium Azide as preservative. State: Purified State: Liquid purified Ig fraction.
Concentration:	lot specific
Purification:	Protein G Chromatography, eluted with high and low pH buffers and neutralized immediately, followed by dialysis against PBS.
Conjugation:	Unconjugated
Storage:	Store the antibody undiluted at 2-8°C for one month or (in aliquots) at -20°C for longer. Avoid repeated freezing and thawing.
Stability:	Shelf life: one year from despatch.
Gene Name:	cAMP responsive element binding protein 3-like 1
Database Link:	Entrez Gene 90993 Human Q96BA8



[View online »](#)

Background:

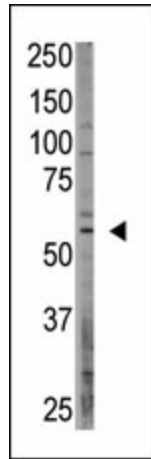
OASIS is a putative CREB/ATF family transcription factor with a putative C-terminal hydrophobic transmembrane domain. It can activate transcription through box-B elements but not through CRE of somatostatin. Shortening of the OASIS transmembrane domain results in a significant increase in transcriptional activity and changes its subcellular localization from the endoplasmic reticulum to the nucleus.

Synonyms:

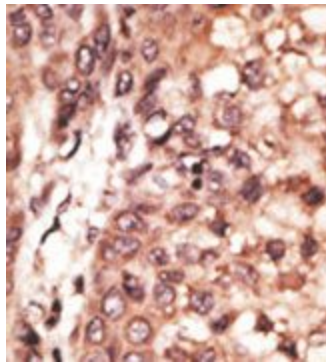
PSEC0238

Note:

Calculated MW: 57005 Da

Product images:

The anti-OASIS C-term Antibody is used in Western blot to detect OASIS in A375 lysate



Formalin-fixed and paraffin-embedded human cancer tissue reacted with the primary antibody, which was peroxidase-conjugated to the secondary antibody, followed by DAB staining.