

Product datasheet for **AP13185PU-N**

MMP7 Rabbit Polyclonal Antibody

Product data:

Product Type:	Primary Antibodies
Applications:	IHC, WB
Recommended Dilution:	ELISA: 1/1,000. Western blotting: 1/1,000. Immunohistochemistry: 1/50-1/100.
Reactivity:	Human
Host:	Rabbit
Isotype:	Ig
Clonality:	Polyclonal
Immunogen:	KLH conjugated synthetic peptide between 117-146 amino acids from the Central region of Human MMP7.
Specificity:	This antibody reacts to MMP7.
Formulation:	PBS with 0.09% (W/V) sodium azide State: Purified State: Liquid purified Ig fraction
Concentration:	lot specific
Purification:	Saturated Ammonium Sulfate (SAS) precipitation followed by dialysis against PBS
Conjugation:	Unconjugated
Storage:	Store undiluted at 2-8°C for one month or (in aliquots) at -20°C for longer. Avoid repeated freezing and thawing.
Stability:	Shelf life: one year from despatch.
Predicted Protein Size:	29677 Da
Gene Name:	matrix metalloproteinase 7
Database Link:	Entrez Gene 4316 Human P09237



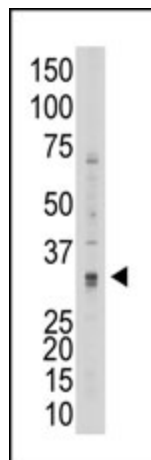
[View online »](#)

Background:

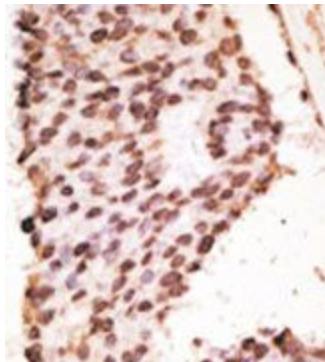
Proteins of the matrix metalloproteinase (MMP) family are involved in the breakdown of extracellular matrix in normal physiological processes, such as embryonic development, reproduction, and tissue remodeling, as well as in disease processes, such as arthritis and metastasis. Most MMPs are secreted as inactive proproteins which are activated when cleaved by extracellular proteinases. MMP7 degrades proteoglycans, fibronectin, elastin and casein and differs from most MMP family members in that it lacks a conserved C-terminal protein domain. The enzyme is involved in wound healing, and studies in mice suggest that it regulates the activity of defensins in intestinal mucosa. The gene is part of a cluster of MMP genes which localize to chromosome 11q22.3.

Synonyms:

Matrilysin, Pump-1 protease, Uterine metalloproteinase, Matrix metalloproteinase-7, MMP7, MPLS1, PUMP1, Matrin

Product images:


The anti-MMP7 N-term Pab is used in Western blot to detect MMP7 in 293 cell lysate.



Formalin-fixed and paraffin-embedded human cancer tissue reacted with the primary antibody, which was peroxidase-conjugated to the secondary antibody, followed by AEC staining.