

## Product datasheet for **AP13179PU-N**

### **MMP25 (C-term) Rabbit Polyclonal Antibody**

#### **Product data:**

<b>Product Type:</b>	Primary Antibodies
<b>Applications:</b>	WB
<b>Recommended Dilution:</b>	Peptide ELISA: 1/1,000. Western blotting: 1/1,000.
<b>Reactivity:</b>	Human, Mouse
<b>Host:</b>	Rabbit
<b>Isotype:</b>	Ig
<b>Clonality:</b>	Polyclonal
<b>Immunogen:</b>	KLH conjugated synthetic peptide between 470-499 amino acids from the C-terminal region of human MMP25.
<b>Specificity:</b>	This antibody reacts to MMP25.
<b>Formulation:</b>	PBS with 0.09% (W/V) sodium azide State: Purified State: Liquid purified Ig
<b>Concentration:</b>	lot specific
<b>Purification:</b>	Saturated Ammonium Sulfate (SAS) precipitation followed by dialysis against PBS.
<b>Conjugation:</b>	Unconjugated
<b>Storage:</b>	Store the antibody undiluted at 2-8°C for one month or (in aliquots) at -20°C for longer. Avoid repeated freezing and thawing.
<b>Stability:</b>	Shelf life: one year from despatch.
<b>Gene Name:</b>	matrix metalloproteinase 25
<b>Database Link:</b>	<a href="#">Entrez Gene 64386 Human Q9NPA2</a>



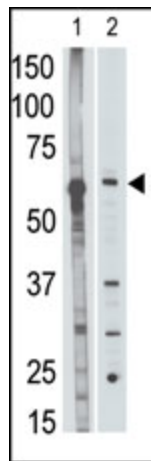
[View online »](#)

**Background:**

Proteins of the matrix metalloproteinase (MMP) family are involved in the breakdown of extracellular matrix in normal physiological processes, such as embryonic development, reproduction, and tissue remodeling, as well as in disease processes, such as arthritis and metastasis. Most MMPs are secreted as inactive proproteins which are activated when cleaved by extracellular proteinases. However, MMP25 is a member of the membrane-type MMP (MT-MMP) subfamily; each member of this subfamily contains a potential transmembrane domain suggesting that these proteins are expressed at the cell surface rather than secreted. In addition, it is thought that this protein is activated intracellularly by furin-like enzymes. This protein activates MMP2 by cleavage. The gene has previously been referred to as MMP20 but has been renamed matrix metalloproteinase 25 (MMP25).

**Synonyms:**

Matrix metalloproteinase-25, MMP25, MMP20, MMPL1, MT6MMP, Leukolysin, MT6-MMP, MT-MMP 6

**Product images:**

The anti-MMP25 C-term Antibody is used in Western blot to detect MMP25 in mouse liver tissue lysate (lane 1) and HL60 cell lysate (lane 2) lysate.