

## Product datasheet for **AP13178PU-N**

### MMP24 Rabbit Polyclonal Antibody

#### Product data:

Product Type:	Primary Antibodies
Applications:	IHC, WB
Recommended Dilution:	ELISA: 1/1,000. Immunohistochemistry: 1/50 - 1/100. Western Blot.
Reactivity:	Human
Host:	Rabbit
Isotype:	Ig
Clonality:	Polyclonal
Immunogen:	This antibody is generated from rabbits immunized with a KLH conjugated synthetic peptide selected from the center region of human MMP24.
Specificity:	This antibody reacts top MMP24.
Formulation:	PBS with 0.09% (W/V) sodium azide State: Purified State: Liquid purified Ig
Concentration:	lot specific
Purification:	Protein G column, eluted with high and low pH buffers and neutralized immediately, followed by dialysis against PBS
Conjugation:	Unconjugated
Storage:	Store the antibody undiluted at 2-8°C for one month or (in aliquots) at -20°C for longer. Avoid repeated freezing and thawing.
Stability:	Shelf life: one year from despatch.
Gene Name:	matrix metalloproteinase 24
Database Link:	<a href="#">Entrez Gene 10893 Human Q9Y5R2</a>



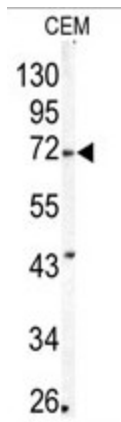
[View online »](#)

**Background:**

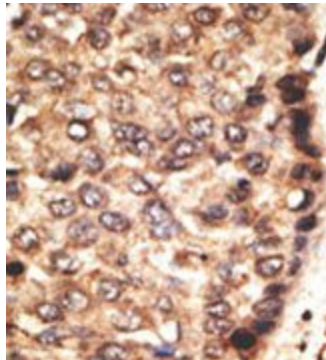
Proteins of the matrix metalloproteinase (MMP) family are involved in the breakdown of extracellular matrix in normal physiological processes, such as embryonic development, reproduction, and tissue remodeling, as well as in disease processes, such as arthritis and metastasis. Most MMPs are secreted as inactive proproteins which are activated when cleaved by extracellular proteinases. However, MMP24 is a member of the membrane-type MMP (MT-MMP) subfamily; each member of this subfamily contains a potential transmembrane domain suggesting that these proteins are expressed at the cell surface rather than secreted. This protein activates MMP2 by cleavage. The gene has previously been referred to as MMP25 but has been renamed matrix metalloproteinase 24 (MMP24).

**Synonyms:**

Matrix metalloproteinase-24, MT-MMP 5, MT5-MMP, MT5MMP, MMP24

**Product images:**

Western blot analysis of MMP24 Antibody (Center) in HL60 cell line lysates (35ug/lane). MMP24 (arrow) was detected using the purified Pab.



Formalin-fixed and paraffin-embedded human cancer tissue reacted with the primary antibody, which was peroxidase-conjugated to the secondary antibody, followed by AEC staining.