

Product datasheet for **AP13176PU-N**

MMP20 Rabbit Polyclonal Antibody

Product data:

Product Type:	Primary Antibodies
Applications:	IHC, WB
Recommended Dilution:	ELISA: 1/1,000. Western Blot: 1/50 - 1/100. Immunohistochemistry: 1/50 - 1/100.
Reactivity:	Human
Host:	Rabbit
Isotype:	Ig
Clonality:	Polyclonal
Immunogen:	This antibody is generated from rabbits immunized with a KLH conjugated synthetic peptide selected from the center region of human MMP20.
Specificity:	This antibody reacts to MMP20.
Formulation:	PBS with 0.09% (W/V) sodium azide State: Purified State: Liquid purified Ig
Concentration:	lot specific
Purification:	Protein G column, eluted with high and low pH buffers and neutralized immediately, followed by dialysis against PBS
Conjugation:	Unconjugated
Storage:	Store the antibody undiluted at 2-8°C for one month or (in aliquots) at -20°C for longer. Avoid repeated freezing and thawing.
Stability:	Shelf life: one year from despatch.
Gene Name:	matrix metalloproteinase 20
Database Link:	Entrez Gene 9313 Human O60882



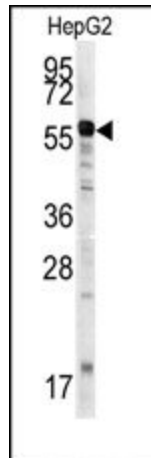
[View online »](#)

Background:

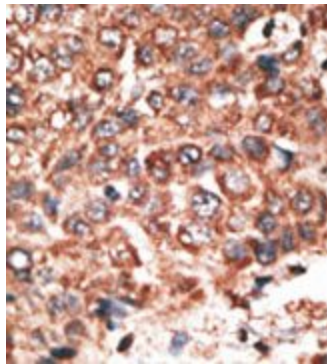
MMP20 degrades amelogenin, the major protein component of the enamel matrix, as well as two of the macromolecules characterizing the cartilage extracellular matrix: aggrecan and the cartilage oligomeric matrix protein (COMP). MMP20 may play a central role in tooth enamel formation.

Synonyms:

Matrix metalloproteinase-20, MMP20, Enamel metalloproteinase, Enamelysin

Product images:


Western blot analysis of anti-MMP20 Antibody (Center) in HepG2 cell line lysates (35ug/lane). MMP20 (arrow) was detected using the purified Pab.



Formalin-fixed and paraffin-embedded human cancer tissue reacted with the primary antibody, which was peroxidase-conjugated to the secondary antibody, followed by DAB staining.