

Product datasheet for **AP13172PU-N**

MMP15 (N-term) Rabbit Polyclonal Antibody

Product data:

Product Type:	Primary Antibodies
Applications:	WB
Recommended Dilution:	ELISA: 1/1,000. Western blotting: 1/100 - 1/500.
Reactivity:	Human, Mouse
Host:	Rabbit
Isotype:	Ig
Clonality:	Polyclonal
Immunogen:	This antibody is generated from rabbits immunized with a KLH conjugated synthetic peptide selected from the N-terminal region of human MMP15.
Specificity:	This antibody reacts to MMP15.
Formulation:	PBS with 0.09% (W/V) sodium azide State: Purified State: Liquid purified Ig
Concentration:	lot specific
Purification:	Protein G column, eluted with high and low pH buffers and neutralized immediately, followed by dialysis against PBS
Conjugation:	Unconjugated
Storage:	Store the antibody undiluted at 2-8°C for one month or (in aliquots) at -20°C for longer. Avoid repeated freezing and thawing.
Stability:	Shelf life: one year from despatch.
Gene Name:	matrix metalloproteinase 15
Database Link:	Entrez Gene 4324 Human P51511



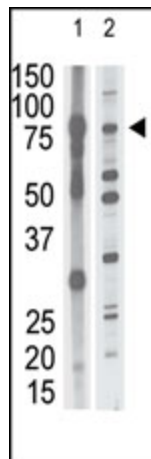
[View online »](#)

Background:

Proteins of the matrix metalloproteinase (MMP) family are involved in the breakdown of extracellular matrix in normal physiological processes, such as embryonic development, reproduction, and tissue remodeling, as well as in disease processes, such as arthritis and metastasis. Most MMPs are secreted as inactive proproteins which are activated when cleaved by extracellular proteinases. However, MMP15 is a member of the membrane-type MMP (MT-MMP) subfamily; each member of this subfamily contains a potential transmembrane domain suggesting that these proteins are expressed at the cell surface rather than secreted.

Synonyms:

MMP15, Matrix metalloproteinase-15, Membrane-type matrix metalloproteinase 2, MT-MMP 2, MTMMP2, Membrane-type-2 matrix metalloproteinase, MT2-MMP, MT2MMP, SMCP-2

Product images:

The anti-MMP15 N-term Antibody is used in Western blot to detect MMP15 in mouse brain tissue lysate (lane 1) and HL60 cell lysate (lane 2) lysate.