

Product datasheet for **AP13171PU-N**

MMP14 (N-term) Rabbit Polyclonal Antibody

Product data:

Product Type:	Primary Antibodies
Applications:	IHC, WB
Recommended Dilution:	ELISA: 1/1,000. Western blotting: 1/100 - 1/500. Immunohistochemistry: 1/50 - 1/100.
Reactivity:	Human
Host:	Rabbit
Isotype:	Ig
Clonality:	Polyclonal
Immunogen:	This antibody is generated from rabbits immunized with a KLH conjugated synthetic peptide selected from the N-terminal region of human MMP14.
Specificity:	This antibody reacts to MMP14.
Formulation:	PBS with 0.09% (W/V) sodium azide State: Purified State: Liquid purified Ig
Concentration:	lot specific
Purification:	Protein G column, eluted with high and low pH buffers and neutralized immediately, followed by dialysis against PBS
Conjugation:	Unconjugated
Storage:	Store the antibody undiluted at 2-8°C for one month or (in aliquots) at -20°C for longer. Avoid repeated freezing and thawing.
Stability:	Shelf life: one year from despatch.
Gene Name:	matrix metalloproteinase 14
Database Link:	Entrez Gene 4323 Human P50281



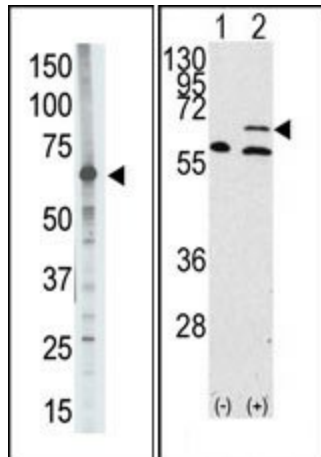
[View online »](#)

Background:

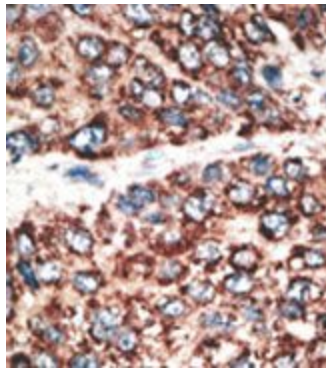
Proteins of the matrix metalloproteinase (MMP) family are involved in the breakdown of extracellular matrix in normal physiological processes, such as embryonic development, reproduction, and tissue remodeling, as well as in disease processes, such as arthritis and metastasis. Most MMPs are secreted as inactive proproteins which are activated when cleaved by extracellular proteinases. MMP14 seems to specifically activate progelatinase A, and may thus trigger invasion by tumor cells by activating progelatinase A on the tumor cell surface. Expression is significant in stromal cells of colon, breast, and head and neck.

Synonyms:

Matrix metalloproteinase-14, MMP14, MMP-X1, Membrane-type-1 matrix metalloproteinase

Product images:


(LEFT)The anti-MMP14 N-term Antibody is used in Western blot to detect MMP14 in A375 lysate. (RIGHT)Western blot analysis of MMP14 (arrow) using rabbit polyclonal MMP14 Antibody (N-term). 293 cell lysates (2 ug/lane) either nontransfected (Lane 1) or transiently transfected with the MMP14 gene (Lane 2)



Formalin-fixed and paraffin-embedded human cancer tissue reacted with the primary antibody, which was peroxidase-conjugated to the secondary antibody, followed by DAB staining.