

Product datasheet for **AP13169PU-N**

MMP12 (C-term) Rabbit Polyclonal Antibody

Product data:

Product Type:	Primary Antibodies
Applications:	IHC, WB
Recommended Dilution:	ELISA: 1/1,000. Western blotting: 1/100 - 1/500. Immunohistochemistry: 1/50 - 1/100.
Reactivity:	Human
Host:	Rabbit
Isotype:	Ig
Clonality:	Polyclonal
Immunogen:	This antibody is generated from rabbits immunized with a KLH conjugated synthetic peptide selected from the C-terminal region of human MMP12.
Specificity:	This antibody reacts to MMP12.
Formulation:	PBS with 0.09% (W/V) sodium azide State: Purified State: Liquid purified Ig
Concentration:	lot specific
Purification:	Protein G column, eluted with high and low pH buffers and neutralized immediately, followed by dialysis against PBS
Conjugation:	Unconjugated
Storage:	Store the antibody undiluted at 2-8°C for one month or (in aliquots) at -20°C for longer. Avoid repeated freezing and thawing.
Stability:	Shelf life: one year from despatch.
Gene Name:	matrix metalloproteinase 12
Database Link:	Entrez Gene 4321 Human P39900

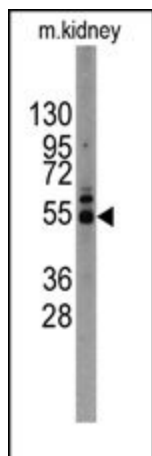

[View online »](#)

Background:

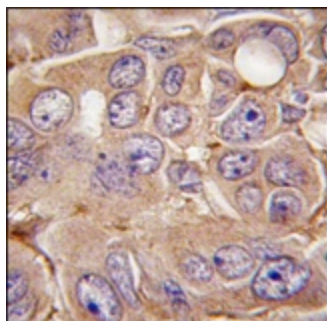
Proteins of the matrix metalloproteinase (MMP) family are involved in the breakdown of extracellular matrix in normal physiological processes, such as embryonic development, reproduction, and tissue remodeling, as well as in disease processes, such as arthritis and metastasis. Most MMPs are secreted as inactive proproteins which are activated when cleaved by extracellular proteinases. MMP12 may be involved in tissue injury and remodeling. This protein has significant elastolytic activity. MMP12 can accept large and small amino acids at the P1' site, but has a preference for leucine. Aromatic or hydrophobic residues are preferred at the P1 site, with small hydrophobic residues (preferably alanine) occupying P3. The protein is found in alveolar macrophages but not in peripheral blood monocytes. MMP12 can be induced by exposure to lipopolysaccharide, and is inhibited by dexamethasone.

Synonyms:

Macrophage metalloelastase, HME, ME, Matrix metalloproteinase-12, MMP12, Macrophage elastase

Product images:


Western blot analysis of anti-MMP12 Antibody (C-term) in mouse kidney tissue lysates (35ug/lane). MMP12 (arrow) was detected using the purified Pab (1:240 dilution).



Formalin-fixed and paraffin-embedded human breast carcinoma tissue reacted with MMP12 antibody (C-term), which was peroxidase-conjugated to the secondary antibody, followed by DAB staining.