

Product datasheet for **AP13168PU-N**

MMP11 (C-term) Rabbit Polyclonal Antibody

Product data:

Product Type:	Primary Antibodies
Applications:	WB
Recommended Dilution:	ELISA: 1/1,000. Western blotting: 1/100 - 1/500.
Reactivity:	Human, Mouse
Host:	Rabbit
Isotype:	Ig
Clonality:	Polyclonal
Immunogen:	This antibody is generated from rabbits immunized with a KLH conjugated synthetic peptide selected from the C-terminal region of human MMP11.
Specificity:	This antibody reacts to MMP11.
Formulation:	PBS with 0.09% (W/V) sodium azide State: Purified State: Liquid purified Ig
Concentration:	lot specific
Purification:	Protein G column, eluted with high and low pH buffers and neutralized immediately, followed by dialysis against PBS
Conjugation:	Unconjugated
Storage:	Store the antibody undiluted at 2-8°C for one month or (in aliquots) at -20°C for longer. Avoid repeated freezing and thawing.
Stability:	Shelf life: one year from despatch.
Gene Name:	matrix metalloproteinase 11
Database Link:	Entrez Gene 4320 Human P24347



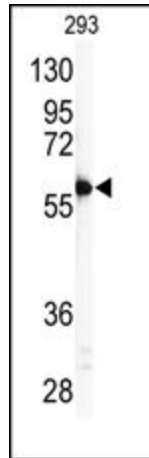
[View online »](#)

Background:

Proteins of the matrix metalloproteinase (MMP) family are involved in the breakdown of extracellular matrix in normal physiological processes, such as embryonic development, reproduction, and tissue remodeling, as well as in disease processes, such as arthritis and metastasis. Most MMPs are secreted as inactive proproteins which are activated when cleaved by extracellular proteinases. MMP11 may play an important role in the progression of epithelial malignancies. It is specifically expressed in stromal cells of breast carcinomas.

Synonyms:

MMP11, Stromelysin-3, SL-3, ST3, STMY3, Matrix metalloproteinase-11

Product images:

Western blot analysis of anti-MMP11 Antibody (C-term) in 293 cell line lysates (35ug/lane). MMP11 (arrow) was detected using the purified Pab.