

## Product datasheet for **AP13155PU-N**

### MLLT1 (C-term) Rabbit Polyclonal Antibody

#### Product data:

Product Type:	Primary Antibodies
Applications:	WB
Recommended Dilution:	ELISA: 1/1,000. Western blotting: 1/100 - 1/500.
Reactivity:	Human
Host:	Rabbit
Isotype:	Ig
Clonality:	Polyclonal
Immunogen:	This antibody is generated from rabbits immunized with a KLH conjugated synthetic peptide selected from the C-terminal region of human MLLT1.
Specificity:	This antibody reacts to MLLT1.
Formulation:	PBS with 0.09% (W/V) sodium azide State: Purified State: Liquid purified Ig
Concentration:	lot specific
Purification:	Protein G column, eluted with high and low pH buffers and neutralized immediately, followed by dialysis against PBS
Conjugation:	Unconjugated
Storage:	Store the antibody undiluted at 2-8°C for one month or (in aliquots) at -20°C for longer. Avoid repeated freezing and thawing.
Stability:	Shelf life: one year from despatch.
Gene Name:	myeloid/lymphoid or mixed-lineage leukemia; translocated to, 1
Database Link:	<a href="#">Entrez Gene 4298 Human Q03111</a>



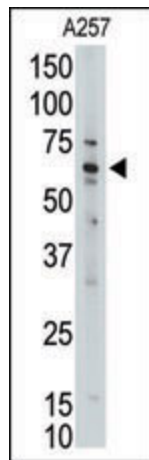
[View online »](#)

**Background:**

Chromosome band 11q23 is the site of translocations in myeloid and lymphoid acute leukemias, pediatric leukemias, and treatment-induced secondary acute myelogenous leukemia. The translocation breakpoints cluster in a restricted region of the HRX gene resulting in chimeric genes that encode an N-terminal portion of Hrx fused to various partner proteins. Myeloid/lymphoid or mixed-lineage leukemia translocated to 1 (MLLT1) is a nuclear protein with transcriptional transactivation properties that is fused to Hrx in t(11;19) leukemias. The minimal MLLT1 sequence required for transcription activation was narrowed to the C-terminal 90 amino acids.

**Synonyms:**

LTG19, YEATS1

**Product images:**

Western blot analysis of anti-MLLT1 Pab in A257 cell line lysate (35ug/lane). MLLT1 (arrow) was detected using the purified Pab.