

Product datasheet for **AP13142PU-N**

MAGED2 (C-term) Rabbit Polyclonal Antibody

Product data:

Product Type:	Primary Antibodies
Applications:	IHC, WB
Recommended Dilution:	ELISA: 1/1,000. Western blotting: 1/100 - 1/500. Immunohistochemistry: 1/50 - 1/100.
Reactivity:	Human
Host:	Rabbit
Isotype:	Ig
Clonality:	Polyclonal
Immunogen:	This antibody is generated from rabbits immunized with a KLH conjugated synthetic peptide selected from the C-terminal region of human MAGED2.
Specificity:	This antibody reacts to MAGED2.
Formulation:	PBS with 0.09% (W/V) sodium azide State: Purified State: Liquid purified Ig
Concentration:	lot specific
Purification:	Protein G column, eluted with high and low pH buffers and neutralized immediately, followed by dialysis against PBS
Conjugation:	Unconjugated
Storage:	Store the antibody undiluted at 2-8°C for one month or (in aliquots) at -20°C for longer. Avoid repeated freezing and thawing.
Stability:	Shelf life: one year from despatch.
Gene Name:	MAGE family member D2
Database Link:	Entrez Gene 10916 Human Q9UNF1



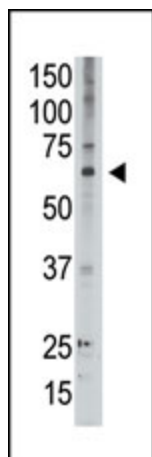
[View online »](#)

Background:

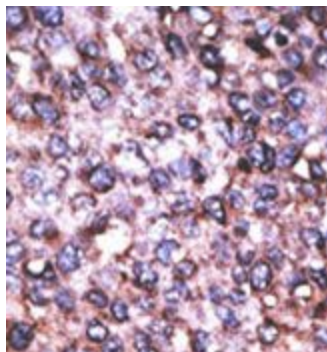
MAGED2 is a member of the MAGED gene family. In contrast to the MAGEA and MAGEB genes, which have their entire coding sequences located in the last exon, the MAGED genes have their coding sequences located throughout multiple exons. Also, the MAGEA and MAGEB genes are silent in normal tissues with the exception of testis and placenta, whereas the MAGED genes are expressed ubiquitously. The MAGED genes are clustered on chromosome Xp11. This gene is located in Xp11.2, a hot spot for X-linked mental retardation (XLMR).

Synonyms:

Melanoma-associated antigen D2, MAGED2, BCG1

Product images:


The anti-MAGED2 C-term Antibody is used in Western blot to detect MAGED2 in A549 lysate.



Formalin-fixed and paraffin-embedded human cancer tissue reacted with the primary antibody, which was peroxidase-conjugated to the secondary antibody, followed by AEC staining.