

## Product datasheet for **AP13140PU-N**

### **MAGEC1 (C-term) Rabbit Polyclonal Antibody**

#### **Product data:**

Product Type:	Primary Antibodies
Applications:	IHC, WB
Recommended Dilution:	ELISA: 1/1,000. Immunohistochemistry: 1/50 - 1/100. Western Blot: 1/100 - 1/500.
Reactivity:	Human
Host:	Rabbit
Isotype:	Ig
Clonality:	Polyclonal
Immunogen:	This antibody is generated from rabbits immunized with a KLH conjugated synthetic peptide selected from the C-terminal region of human MAGEC1.
Specificity:	This antibody reacts to MAGEC1.
Formulation:	PBS with 0.09% (W/V) sodium azide State: Purified State: Liquid purified Ig
Concentration:	lot specific
Purification:	Protein G column, eluted with high and low pH buffers and neutralized immediately, followed by dialysis against PBS
Conjugation:	Unconjugated
Storage:	Store the antibody undiluted at 2-8°C for one month or (in aliquots) at -20°C for longer. Avoid repeated freezing and thawing.
Stability:	Shelf life: one year from despatch.
Gene Name:	MAGE family member C1
Database Link:	<a href="#">Entrez Gene 9947 Human O60732</a>



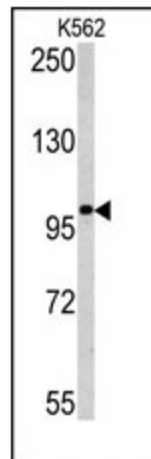
[View online »](#)

**Background:**

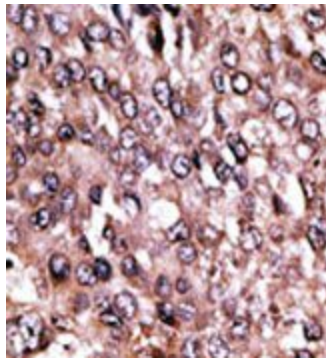
MAGEC1 is a member of the melanoma antigen gene (MAGE) family. The proteins of this family are tumor-specific antigens that can be recognized by autologous cytolytic T lymphocytes. This protein contains a large number of unique short repetitive sequences in front of the MAGE-homologous sequence, thus is about 800 residues longer than the other MAGE proteins. This gene is expressed in a significant proportion of tumors of various histological types, whereas it is silent in normal tissues, except testis. The function of this gene is unknown.

**Synonyms:**

Melanoma-associated antigen C1, MAGEC1

**Product images:**


Western blot analysis of MAGEC1 antibody (C-term) in K562 cell line lysates (35ug/lane). MAGEC1 (arrow) was detected using the purified Pab.



Formalin-fixed and paraffin-embedded human cancer tissue reacted with the primary antibody, which was peroxidase-conjugated to the secondary antibody, followed by AEC staining.