

Product datasheet for **AP13131PU-N**

MAGEA4 (N-term) Rabbit Polyclonal Antibody

Product data:

Product Type:	Primary Antibodies
Applications:	IHC, WB
Recommended Dilution:	ELISA: 1/1,000. Western blotting: 1/100-1/500. Immunohistochemistry: 1/50-1/100.
Reactivity:	Human
Host:	Rabbit
Isotype:	Ig
Clonality:	Polyclonal
Immunogen:	This antibody is generated from rabbits immunized with a KLH conjugated synthetic peptide selected from the N-terminal region of human MAGEA4.
Specificity:	This antibody detects MAGEA4 at N-term.
Formulation:	PBS with 0.09% (W/V) Sodium Azide as preservative. State: Purified State: Liquid purified Ig fraction.
Concentration:	lot specific
Purification:	Protein G Chromatography, eluted with high and low pH buffers and neutralized immediately, followed by dialysis against PBS.
Conjugation:	Unconjugated
Storage:	Store the antibody undiluted at 2-8°C for one month or (in aliquots) at -20°C for longer. Avoid repeated freezing and thawing.
Stability:	Shelf life: one year from despatch.
Gene Name:	MAGE family member A4
Database Link:	Entrez Gene 4103 Human P43358



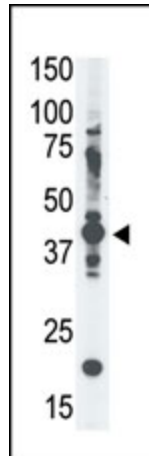
[View online »](#)

Background:

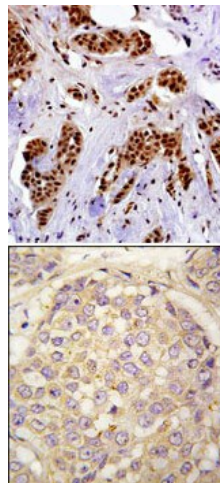
MAGEA4 is a member of the MAGEA gene family. The members of this family encode proteins with 50 to 80% sequence identity to each other. The promoters and first exons of the MAGEA genes show considerable variability, suggesting that the existence of this gene family enables the same function to be expressed under different transcriptional controls. The MAGEA genes are clustered at chromosomal location Xq28. They have been implicated in some hereditary disorders, such as dyskeratosis congenita.

Synonyms:

MAGEA4, MAGE4, MAGE 4, Melanoma-associated antigen 4

Product images:


The anti-MAGE-A4 Pab is used in Western blot to detect MAGE-A4 in A375 cell lysate.



TOP: Immunostaining of paraformaldehyde-fixed and paraffin-embedded human breast carcinoma with MAGE-A4 antibody (1:50 dilution), followed by reacting with biotin-conjugated secondary antibody, ABC solution and developing with DAB. Cancerous cells show nuclear staining of MAGE-A4. Magnification: 40X. BOTTOM: Formalin-fixed and paraffin-embedded human breast carcinoma tissue reacted with MAGEA4 antibody (N-term), which was peroxidase-conjugated to the secondary antibody, followed by DAB staining.