

## Product datasheet for **AP13126PU-N**

### **MAGEA11 (N-term) Rabbit Polyclonal Antibody**

#### **Product data:**

|                              |   |
|------------------------------|---|
| <b>Product Type:</b>         | Primary Antibodies  |
| <b>Applications:</b>         | IHC, WB   |
| <b>Recommended Dilution:</b> | ELISA: 1/1,000.<br>Western blotting: 1/50 - 1/100.<br>Immunohistochemistry: 1/50 - 1/100.   |
| <b>Reactivity:</b>           | Human   |
| <b>Host:</b>                 | Rabbit  |
| <b>Isotype:</b>              | Ig  |
| <b>Clonality:</b>            | Polyclonal  |
| <b>Immunogen:</b>            | This antibody is generated from rabbits immunized with a KLH conjugated synthetic peptide selected from the N-terminal region of human MAGEA11. |
| <b>Specificity:</b>          | This antibody reacts to MAGEA11.  |
| <b>Formulation:</b>          | PBS with 0.09% (W/V) sodium azide<br>State: Purified<br>State: Liquid purified Ig   |
| <b>Concentration:</b>        | lot specific  |
| <b>Purification:</b>         | Protein G column, eluted with high and low pH buffers and neutralized immediately, followed by dialysis against PBS                             |
| <b>Conjugation:</b>          | Unconjugated  |
| <b>Storage:</b>              | Store the antibody undiluted at 2-8°C for one month or (in aliquots) at -20°C for longer.<br>Avoid repeated freezing and thawing.               |
| <b>Stability:</b>            | Shelf life: one year from despatch.   |
| <b>Gene Name:</b>            | MAGE family member A11  |
| <b>Database Link:</b>        | <a href="#">Entrez Gene 4110 Human P43364</a>   |



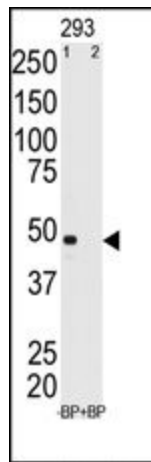
[View online »](#)

**Background:**

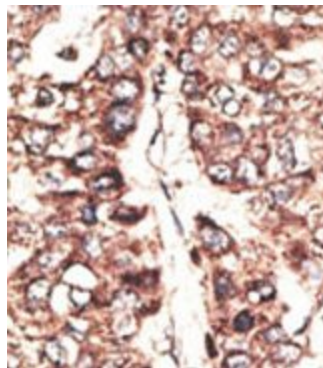
MAGEA11 is a member of the MAGEA gene family. The members of this family have their entire coding sequences located in the last exon, and the encoded proteins show 50 to 80% sequence identity between each other. The promoters and first exons of the MAGEA genes show considerable variability, suggesting that the existence of this gene family enables the same function to be expressed under different transcriptional controls. The MAGEA genes are expressed at a high level in a number of tumors of various histologic types, and are silent in normal tissues with the exception of testis and placenta. The MAGEA genes are clustered on chromosome Xq28. They may be implicated in some hereditary disorders, such as dyskeratosis congenita.

**Synonyms:**

Melanoma-associated antigen 11, MAGEA11, MAGE11, MAGE 11

**Product images:**

Western blot analysis of anti-MAGEA11 Antibody (N-term) pre-incubated with and without blocking peptide in 293 cell line lysate. MAGEA11 (arrow) was detected using the purified Pab.



Formalin-fixed and paraffin-embedded human cancer tissue reacted with the primary antibody, which was peroxidase-conjugated to the secondary antibody, followed by DAB staining.