

Product datasheet for **AP13124PU-N**

ApoER2 (LRP8) (C-term) Rabbit Polyclonal Antibody

Product data:

Product Type:	Primary Antibodies
Applications:	IHC, WB
Recommended Dilution:	ELISA: 1/1,000. Western blot: 1/1000. Immunohistochemistry on paraffin sections: 1/50 - 1/100.
Reactivity:	Human
Host:	Rabbit
Isotype:	Ig
Clonality:	Polyclonal
Immunogen:	This antibody is generated from rabbits immunized with a KLH conjugated synthetic peptide selected from 934-963 amino acids at the C-terminal region of human LRP8.
Specificity:	This antibody reacts to APOER2 (LRP8).
Formulation:	PBS with 0.09% (W/V) sodium azide State: Purified State: Liquid purified Ig
Concentration:	lot specific
Purification:	Saturated Ammonium Sulfate (SAS) precipitation followed by dialysis against PBS.
Conjugation:	Unconjugated
Storage:	Store the antibody undiluted at 2-8°C for one month or (in aliquots) at -20°C for longer. Avoid repeated freezing and thawing.
Stability:	Shelf life: one year from despatch.
Gene Name:	LDL receptor related protein 8
Database Link:	Entrez Gene 7804 Human Q14114



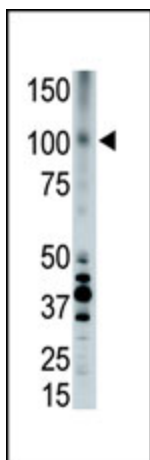
[View online »](#)

Background:

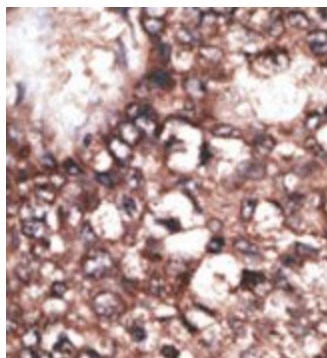
LRP8 is an apolipoprotein E receptor, a member of the low density lipoprotein receptor (LDLR) family. Apolipoprotein E is a small lipophilic plasma protein and a component of lipoproteins such as chylomicron remnants, very low density lipoprotein (VLDL), and high density lipoprotein (HDL). The apolipoprotein E receptor is involved in cellular recognition and internalization of these lipoproteins.

Synonyms:

Apolipoprotein E receptor 2, Low-density lipoprotein receptor-related protein 8

Product images:

The anti-LRP8 Pab is used in Western blot to detect LRP8 in placenta cell lysate.



Formalin-fixed and paraffin-embedded human cancer tissue reacted with the primary antibody, which was peroxidase-conjugated to the secondary antibody, followed by DAB staining.