

Product datasheet for **AP13112PU-N**

Leptin (LEP) (C-term) Rabbit Polyclonal Antibody

Product data:

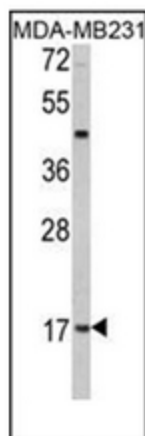
Product Type:	Primary Antibodies
Applications:	IF, WB
Recommended Dilution:	ELISA: 1/1000. Western Blot: 1/50-1/100. Immunofluorescence: 1/10-1/50.
Reactivity:	Human
Host:	Rabbit
Isotype:	Ig
Clonality:	Polyclonal
Immunogen:	KLH conjugated synthetic peptide between 138~167 amino acids from the C-terminal region of Human Leptin
Specificity:	This antibody recognizes Human Leptin (LEP).
Formulation:	PBS containing 0.09% (W/V) Sodium Azide as preservative State: Purified State: Liquid purified Ig fraction
Concentration:	lot specific
Purification:	Protein G Chromatography, eluted with high and low pH buffers and neutralized immediately, followed by dialysis against PBS
Conjugation:	Unconjugated
Storage:	Store undiluted at 2-8°C for one month or (in aliquots) at -20°C for longer. Avoid repeated freezing and thawing.
Stability:	Shelf life: one year from despatch.
Gene Name:	leptin
Database Link:	Entrez Gene 3952 Human P41159
Background:	Leptin (LEP) is an adipocyte-secreted protein that regulates body fat and endocrine functions. Leptin is similar to the mouse obesity protein encoded by the obese gene (ob). In mouse studies, mutations in this gene are linked to severe and morbid obesity.



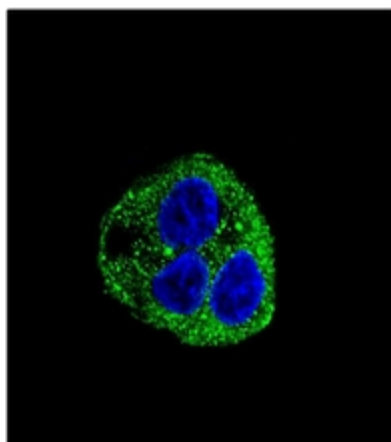
[View online »](#)

Synonyms: LEP, OB, OBS, Obesity factor, Obese protein

Product images:



Western blot analysis of Leptin Antibody (C-term) in MDA-MB231 cell line lysates (35ug/lane). LEP (arrow) was detected using the purified Pab.



Confocal immunofluorescent analysis of Leptin Antibody (C-term) with HepG2 cell followed by Alexa Fluor[®]488-conjugated goat anti-rabbit IgG (green). DAPI was used to stain the cell nuclear (blue).