

Product datasheet for **AP13102PU-N**

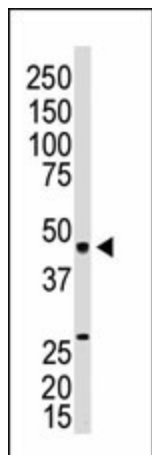
EDG3 (S1PR3) (N-term) Rabbit Polyclonal Antibody

Product data:

Product Type:	Primary Antibodies
Applications:	WB
Recommended Dilution:	ELISA: 1/1,000. Western blotting: 1/100-1/500.
Reactivity:	Human, Mouse
Host:	Rabbit
Isotype:	Ig
Clonality:	Polyclonal
Immunogen:	KLH conjugated synthetic peptide between 6~36 from the N-terminal region of Human EDG3.
Specificity:	This antibody recognizes EDG3 at N-term.
Formulation:	PBS with 0.09% (W/V) Sodium Azide State: Purified State: Liquid purified Ig fraction
Concentration:	lot specific
Purification:	Protein G Chromatography, eluted with high and low pH buffers and neutralized immediately, followed by dialysis against PBS
Conjugation:	Unconjugated
Storage:	Store the antibody undiluted at 2-8°C for one month or (in aliquots) at -20°C for longer. Avoid repeated freezing and thawing.
Stability:	Shelf life: one year from despatch.
Gene Name:	sphingosine-1-phosphate receptor 3
Database Link:	Entrez Gene 1903 Human Q99500
Background:	EDG3 is a member of the EDG family of receptors, which are G protein-coupled receptors. This protein has been identified as a functional receptor for sphingosine 1-phosphate and likely contributes to the regulation of angiogenesis and vascular endothelial cell function.
Synonyms:	S1P receptor 3, S1PR3, EDG3, LPB3, FLJ37523, FLJ93220, MGC71696



[View online »](#)

Product images:

The anti-EDG3 Antibody (N-term) is used in Western blot to detect EDG3 in Mouse kidney lysate.