

Product datasheet for **AP13096PU-N**

Gremlin 1 (GREM1) (C-term) Rabbit Polyclonal Antibody

Product data:

Product Type:	Primary Antibodies
Applications:	IHC, WB
Recommended Dilution:	ELISA: 1/1,000. Western blotting: 1/100 - 1/500. Immunohistochemistry (Application validated by third-party citation).
Reactivity:	Human, Mouse
Host:	Rabbit
Isotype:	Ig
Clonality:	Polyclonal
Immunogen:	This antibody is generated from rabbits immunized with a KLH conjugated synthetic peptide selected from the C-terminus of human Gremlin.
Specificity:	This antibody reacts to GREMLIN.
Formulation:	PBS with 0.09% (W/V) Sodium Azide as preservative State: Purified State: Liquid purified Ig fraction
Concentration:	lot specific
Purification:	Protein G column, eluted with high and low pH buffers and neutralized immediately, followed by dialysis against PBS
Conjugation:	Unconjugated
Storage:	Store undiluted at 2-8°C for one month or (in aliquots) at -20°C for longer. Avoid repeated freezing and thawing.
Stability:	Shelf life: one year from despatch.
Gene Name:	gremlin 1, DAN family BMP antagonist
Database Link:	Entrez Gene 23892 Mouse Entrez Gene 26585 Human O60565



[View online »](#)

Background:

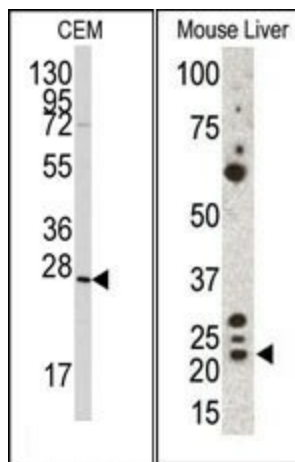
GREMLIN is a member of the BMP (bone morphogenic protein) antagonist family. Like BMPs, BMP antagonists contain cystine knots and typically form homo- and heterodimers. The CAN (cerberus and dan) subfamily of BMP antagonists, to which this gene belongs, is characterized by a C-terminal cystine knot with an eight-membered ring. The antagonistic effect of the secreted glycosylated protein encoded by this gene is likely due to its direct binding to BMP proteins. As an antagonist of BMP, this gene may play a role in regulating organogenesis, body patterning, and tissue differentiation. In mouse, this protein has been shown to relay the sonic hedgehog (SHH) signal from the polarizing region to the apical ectodermal ridge during limb bud outgrowth.

Synonyms:

DAND2, CKTSF1B1, DRM, PIG2, IHG-2, GREM-1

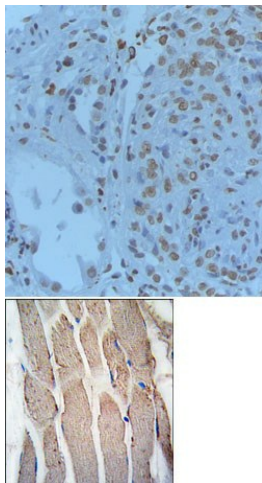
Protein Families:

ES Cell Differentiation/IPS, Secreted Protein

Product images:


(LEFT) Western blot analysis of anti-Gremlin Pab in CEM cell line lysates (35ug/lane). Gremlin (arrow) was detected using the purified Pab.

(RIGHT) Western blot analysis of anti-Gremlin Pab in mouse liver cell lysate. Gremlin (arrow) was detected using purified Pab. Secondary HRP-anti-rabbit was used for signal visualization with chemiluminescence.



(TOP) Formalin-PBS and Bouin embedded paraffin human renal tissue pretreated with heat induced epitope retrieval Citrate buffer pH 6.0 in microwave. Dilution of primary antibody was 1:50. Detection method was ABC system or Vectastain Elite VECTOR. (BOTTOM) Formalin-fixed and paraffin-embedded human skeletal muscle tissue reacted with GREMLIN Antibody (C-term), which was peroxidase-conjugated to the secondary antibody, followed by DAB staining.