

## Product datasheet for **AP13085PU-N**

### ABCB5 (N-term) Rabbit Polyclonal Antibody

#### Product data:

Product Type:	Primary Antibodies
Applications:	FC, WB
Recommended Dilution:	ELISA: 1/1,000. Western blotting: 1/50-1/100. Flow Cytometry.
Reactivity:	Human
Host:	Rabbit
Isotype:	Ig
Clonality:	Polyclonal
Immunogen:	This antibody is generated from rabbits immunized with a KLH conjugated synthetic peptide selected from the N-terminal region of human ABCB5.
Specificity:	This antibody recognizes ABCB5 (N-term).
Formulation:	PBS with 0.09% (W/V) Sodium Azide as preservative. State: Purified State: Liquid purified Ig fraction.
Concentration:	lot specific
Purification:	Prepared by Saturated Ammonium Sulfate (SAS) precipitation followed by dialysis against PBS.
Conjugation:	Unconjugated
Storage:	Store the antibody undiluted at 2-8°C for one month or (in aliquots) at -20°C for longer. Avoid repeated freezing and thawing.
Stability:	Shelf life: one year from despatch.
Gene Name:	ATP binding cassette subfamily B member 5
Database Link:	<a href="#">Entrez Gene 340273 Human Q2M3G0</a>



[View online »](#)

**Background:**

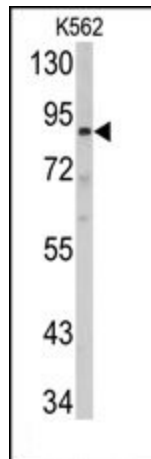
ABCB5 is a plasma membrane transporter able to mediate efflux from cells of the rhodamine dye and of the therapeutic drug doxorubicin. ABCB5 is also responsible for the resistance to doxorubicin of a subset of malignant melanomas. ABCB5 has more recently been identified as a marker for human malignant-melanoma-initiating cells.

**Synonyms:**

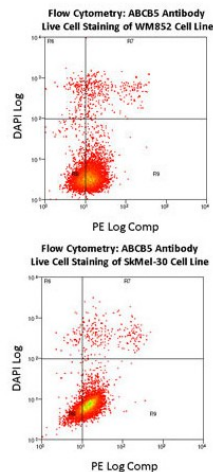
ABCB5alpha; ABCB5beta; EST422562

**Note:**

**Calculated Molecular Weight:** 89831 Da

**Product images:**


Western blot analysis of anti-ABCB5 Antibody (N-term) in K562 cell line lysates (35 ug/lane). ABCB5 (arrow) was detected using the purified Pab.



TOP: Flow Cytometry using ABCB5 Antibody (N-Term) on WM852 cell line. Live cell staining utilized PE-conjugated goat anti-rabbit as a secondary antibody. Analysis was done on an FC500 flow cytometer. BOTTOM: Flow Cytometry using ABCB5 Antibody (N-Term) on SkMel-30 cell line. Live cell staining utilized PE-conjugated goat anti-rabbit as a secondary antibody. Analysis was done on an FC500 flow cytometer.