

Product datasheet for **AP13070PU-N**

BACE2 (Isoform C) (C-term) Rabbit Polyclonal Antibody

Product data:

Product Type:	Primary Antibodies
Applications:	IHC, WB
Recommended Dilution:	ELISA: 1/1,000. Western blot: 1/100 - 1/500. Immunohistochemistry on paraffin sections: 1/50 - 1/100.
Reactivity:	Human
Host:	Rabbit
Isotype:	Ig
Clonality:	Polyclonal
Immunogen:	KLH conjugated synthetic peptide selected from the C-terminal region of human BACE2C
Specificity:	This antibody reacts to BACE2C.
Formulation:	PBS with 0.09% (W/V) sodium azide State: Purified State: Liquid purified Ig
Concentration:	lot specific
Purification:	Affinity chromatography on Protein G
Conjugation:	Unconjugated
Storage:	Store the antibody undiluted at 2-8°C for one month or (in aliquots) at -20°C for longer. Avoid repeated freezing and thawing.
Stability:	Shelf life: one year from despatch.
Gene Name:	beta-site APP-cleaving enzyme 2
Database Link:	Entrez Gene 25825 Human Q9Y5Z0



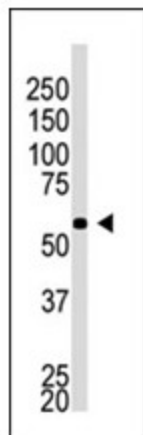
[View online »](#)

Background:

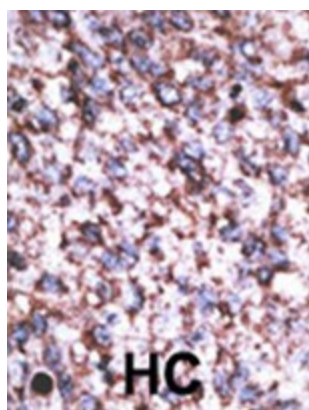
Amyloid-beta peptide aggregation is a signature of Alzheimer disease and a frequent complication of adult Down syndrome patients. Amyloid-beta is generated by proteolytic processing of the amyloid precursor protein (APP) by beta- and gamma-secretase at the N and C termini, respectively. Presenilin-1 is involved in the gamma-secretase activity. BACE is a transmembrane aspartyl protease with beta-secretase activity. BACE2, also termed ALP56 has 2 pepsin-like active centers, a signal sequence, a propeptide, and a long C-terminal extension including a transmembrane domain, with expression in a wide array of tissues. Northern blot analysis revealed low expression of 2.0- and 2.6-kb BACE2 transcripts in most fetal and adult tissues, with higher expression in adult colon, kidney, pancreas, placenta, prostate, stomach, and trachea. Low levels were also detected in brain, with somewhat higher expression in medulla and spinal cord. In situ hybridization analysis of rat brain found low-level BACE2 expression in contrast to BACE expression. The BACE2 expression pattern does not appear to be consistent with that of a beta-secretase. BACE2 has been mapped to 21q22.3, within the Down syndrome critical region.

Synonyms:

Beta-secretase 2, AEPLC, ALP56, ASP21, Memapsin-1, Aspartic-like protease 56 kDa, Down region aspartic protease, ASP1

Product images:

The anti-BACE2C C-term Pab is used in Western blot to detect BACE2C in A549 cell lysate.



Formalin-fixed and paraffin-embedded human cancer tissue reacted with the primary antibody, which was peroxidase-conjugated to the secondary antibody, followed by AEC staining. This data demonstrates the use of this antibody for immunohistochemistry.