

## Product datasheet for **AP13027PU-N**

### **PDX1 pThr11 Rabbit Polyclonal Antibody**

#### **Product data:**

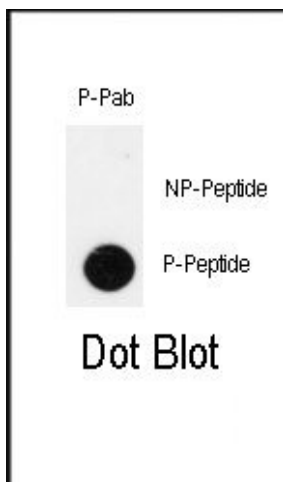
<b>Product Type:</b>	Primary Antibodies
<b>Recommended Dilution:</b>	ELISA: 1/1,000. Dot Blot: 1/500.
<b>Reactivity:</b>	Human
<b>Host:</b>	Rabbit
<b>Isotype:</b>	Ig
<b>Clonality:</b>	Polyclonal
<b>Immunogen:</b>	This antibody is generated from rabbits immunized with a KLH conjugated synthetic phosphopeptide corresponding to amino acid residues surrounding T11 of human IPF.
<b>Specificity:</b>	This antibody reacts to IPF pThr11.
<b>Formulation:</b>	PBS with 0.09% (W/V) sodium azide State: Aff - Purified State: Liquid purified Ig
<b>Concentration:</b>	lot specific
<b>Purification:</b>	Protein A column, followed by two-step phosphospecific peptide affinity purification
<b>Conjugation:</b>	Unconjugated
<b>Storage:</b>	Store the antibody undiluted at 2-8°C for one month or (in aliquots) at -20°C for longer. Avoid repeated freezing and thawing.
<b>Stability:</b>	Shelf life: one year from despatch.
<b>Gene Name:</b>	pancreatic and duodenal homeobox 1
<b>Database Link:</b>	<a href="#">Entrez Gene 3651 Human P52945</a>
<b>Background:</b>	PDX1 is a transcriptional activator of several genes, including insulin, somatostatin, glucokinase, islet amyloid polypeptide, and glucose transporter type 2. The protein is involved in the early development of the pancreas and plays a major role in glucose-dependent regulation of insulin gene expression. Defects in its gene are a cause of pancreatic agenesis, which can lead to early-onset insulin-dependent diabetes mellitus (NIDDM), as well as maturity onset diabetes of the young type 4 (MODY4).



[View online »](#)

**Synonyms:**

PDX1, PDX-1, IPF1, Pancreas/duodenum homeobox protein 1, Insulin promoter factor 1, IPF-1, Islet/duodenum homeobox-1, IDX-1, Somatostatin-transactivating factor 1, STF-1, Insulin upstream factor 1, IUF-1, Glucose-sensitive factor, GSF

**Product images:**

Dot blot analysis of anti-Phospho-IPF-pT11 Antibody on nitrocellulose membrane. 50ng of Phospho-peptide or Non Phospho-peptide per dot were adsorbed. Antibody working concentrations are 0.5ug per ml.