

Product datasheet for **AP13025PU-N**

ENT1 (SLC29A1) pSer254 Rabbit Polyclonal Antibody

Product data:

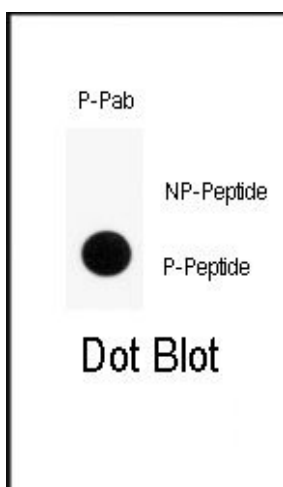
Product Type:	Primary Antibodies
Recommended Dilution:	ELISA: 1/1,000. Dot Blot: 1/500.
Reactivity:	Human
Host:	Rabbit
Isotype:	Ig
Clonality:	Polyclonal
Immunogen:	This antibody is generated from rabbits immunized with a KLH conjugated synthetic phosphopeptide corresponding to amino acid residues surrounding S254 of human ENT1.
Specificity:	This antibody reacts to ENT1 (SLC29A1) pSer254.
Formulation:	PBS with 0.09% (W/V) sodium azide State: Aff - Purified State: Liquid purified Ig
Concentration:	lot specific
Purification:	Protein A column, followed by two-step phosphospecific peptide affinity purification
Conjugation:	Unconjugated
Storage:	Store the antibody undiluted at 2-8°C for one month or (in aliquots) at -20°C for longer. Avoid repeated freezing and thawing.
Stability:	Shelf life: one year from despatch.
Gene Name:	solute carrier family 29 member 1 (Augustine blood group)
Database Link:	Entrez Gene 2030 Human Q99808
Background:	ENT1 is a member of the equilibrative nucleoside transporter family. The protein is categorized as an equilibrative (as opposed to concentrative) transporter that is sensitive to inhibition by nitrobenzylthioinosine (NBMPR). Nucleoside transporters are required for nucleotide synthesis in cells that lack de novo nucleoside synthesis pathways, and are also necessary for the uptake of cytotoxic nucleosides used for cancer and viral chemotherapies.



[View online »](#)

Synonyms: ENT1; MGC1465; MGC3778; OTTHUMP00000016509; OTTHUMP00000016510; OTTHUMP00000016511; OTTHUMP00000016512

Product images:



Dot blot analysis of anti-Phospho-ENT1 (Slc29a1)-pS254 Antibody on nitrocellulose membrane. 50ng of Phospho-peptide or Non Phospho-peptide per dot were adsorbed. Antibody working concentrations are 0.5ug per ml.