

Product datasheet for **AP13023PU-N**

CDK2 pThr14 Rabbit Polyclonal Antibody

Product data:

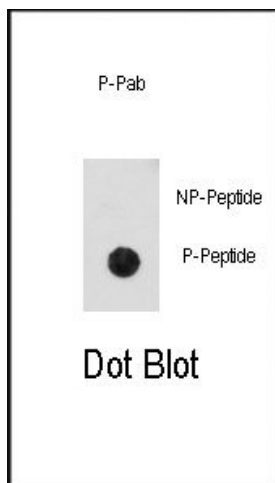
Product Type:	Primary Antibodies
Recommended Dilution:	ELISA: 1/1,000. Dot blotting: 1/500.
Reactivity:	Human
Host:	Rabbit
Isotype:	Ig
Clonality:	Polyclonal
Immunogen:	This antibody is generated from rabbits immunized with a KLH conjugated synthetic phosphopeptide corresponding to amino acid residues surrounding T14 of human CDK2.
Specificity:	This antibody reacts to CDK2 pThr14.
Formulation:	PBS with 0.09% (W/V) sodium azide State: Aff - Purified State: Liquid purified Ig
Concentration:	lot specific
Purification:	Protein A column, followed by two-step phosphospecific peptide affinity purification
Conjugation:	Unconjugated
Storage:	Store the antibody undiluted at 2-8°C for one month or (in aliquots) at -20°C for longer. Avoid repeated freezing and thawing.
Stability:	Shelf life: one year from despatch.
Gene Name:	cyclin-dependent kinase 2
Database Link:	Entrez Gene 1017 Human P24941
Background:	CDK2 is a member of the Ser/Thr protein kinase family. This protein kinase is highly similar to the gene products of <i>S. cerevisiae</i> cdc28, and <i>S. pombe</i> cdc2. It is a catalytic subunit of the cyclin-dependent protein kinase complex, whose activity is restricted to the G1-S phase, and essential for cell cycle G1/S phase transition. This protein associates with and regulated by the regulatory subunits of the complex including cyclin A or E, CDK inhibitor p21Cip1 (CDKN1A) and p27Kip1 (CDKN1B). Its activity is also regulated by its protein phosphorylation.



[View online »](#)

Synonyms: p33 protein kinase

Product images:



Dot blot analysis of anti-Phospho-CDK2-pT14 Antibody on nitrocellulose membrane. 50ng of Phospho-peptide or Non Phospho-peptide per dot were adsorbed. Antibody working concentrations are 0.5ug per ml.