

Product datasheet for **AP13003PU-N**

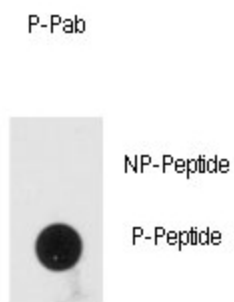
PRKRA pSer246 Rabbit Polyclonal Antibody

Product data:

Product Type:	Primary Antibodies
Recommended Dilution:	ELISA: 1/1,000. Dot Blot: 1/500.
Reactivity:	Human
Host:	Rabbit
Isotype:	Ig
Clonality:	Polyclonal
Immunogen:	This antibody is generated from rabbits immunized with a KLH conjugated synthetic phosphopeptide corresponding to amino acid residues surrounding S246 of human PRKRA.
Specificity:	This antibody detects PRKRA pSer246.
Formulation:	PBS with 0.09% (W/V) Sodium Azide as preservative. State: Aff - Purified State: Liquid purified Ig fraction.
Concentration:	lot specific
Purification:	Protein A Chromatography followed by two-step phosphospecific peptide affinity purification.
Conjugation:	Unconjugated
Storage:	Store the antibody undiluted at 2-8°C for one month or (in aliquots) at -20°C for longer. Avoid repeated freezing and thawing.
Stability:	Shelf life: one year from despatch.
Gene Name:	protein activator of interferon induced protein kinase EIF2AK2
Database Link:	Entrez Gene 8575 Human O75569
Background:	PRKRA appears to have a pro-apoptotic function that may be suppressed in the presence of growth factor. It activates EIF2AK2 in the absence of double-stranded RNA (dsRNA).
Synonyms:	RAX, HSD14, HSD-14
Note:	Molecular weight: 34404 Da



[View online »](#)

Product images:

Dot blot analysis of anti-Phospho-PRKRA pSer246 Antibody (Cat.#AP13003PU-N) on nitrocellulose membrane. 50ng of Phospho-peptide or Non Phospho-peptide per dot were adsorbed. Antibody working concentrations are 0.5ug per ml.

Dot Blot