

Product datasheet for **AP12999PU-N**

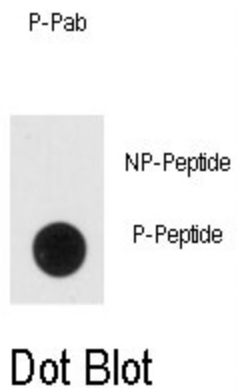
NSE (ENO2) pTyr236 Rabbit Polyclonal Antibody

Product data:

Product Type:	Primary Antibodies
Recommended Dilution:	ELISA: 1/1,000. Dot Blot: 1/500.
Reactivity:	Human
Host:	Rabbit
Isotype:	Ig
Clonality:	Polyclonal
Immunogen:	This antibody is generated from rabbits immunized with a KLH conjugated synthetic phosphopeptide corresponding to amino acid residues surrounding Y236 of human NSE.
Specificity:	This antibody detects Neuron Specific Enolase (NSE) pTyr236.
Formulation:	PBS with 0.09% (W/V) Sodium Azide as preservative. State: Aff - Purified State: Liquid purified Ig fraction.
Concentration:	lot specific
Purification:	Protein A Chromatography followed by two-step phosphospecific peptide affinity purification.
Conjugation:	Unconjugated
Storage:	Store the antibody undiluted at 2-8°C for one month or (in aliquots) at -20°C for longer. Avoid repeated freezing and thawing.
Stability:	Shelf life: one year from despatch.
Gene Name:	enolase 2
Database Link:	Entrez Gene 2026 Human P09104
Background:	NSE is one of the three enolase isoenzymes found in mammals. This isoenzyme, a homodimer, is found in mature neurons and cells of neuronal origin. A switch from alpha enolase to gamma enolase occurs in neural tissue during development in rats and primates.
Synonyms:	NSE, ENO2, Enolase 2, Neural enolase, Gamma-enolase
Note:	Molecular weight: 47138 Da



[View online »](#)

Product images:

Dot blot analysis of anti-Phospho-NSE pTyr236 Antibody (Cat.#AP12999PU-N) on nitrocellulose membrane. 50ng of Phospho-peptide or Non Phospho-peptide per dot were adsorbed. Antibody working concentrations are 0.5ug per ml.