

Product datasheet for **AP12995PU-N**

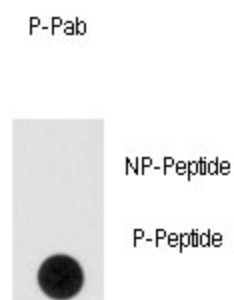
Sprouty 4 (SPRY4) pTyr75 Rabbit Polyclonal Antibody

Product data:

Product Type:	Primary Antibodies
Recommended Dilution:	ELISA: 1/1,000. Dot Blot: 1/500.
Reactivity:	Human
Host:	Rabbit
Isotype:	Ig
Clonality:	Polyclonal
Immunogen:	This antibody is generated from rabbits immunized with a KLH conjugated synthetic phosphopeptide corresponding to amino acid residues surrounding Y75 of human SPRY4.
Specificity:	This antibody detects SPRY4 pTyr75.
Formulation:	PBS with 0.09% (W/V) Sodium Azide as preservative. State: Aff - Purified State: Liquid purified Ig fraction.
Concentration:	lot specific
Purification:	Protein A Chromatography followed by two-step phosphospecific peptide affinity purification.
Conjugation:	Unconjugated
Storage:	Store the antibody undiluted at 2-8°C for one month or (in aliquots) at -20°C for longer. Avoid repeated freezing and thawing.
Stability:	Shelf life: one year from despatch.
Gene Name:	sprouty RTK signaling antagonist 4
Database Link:	Entrez Gene 81848 Human Q9C004
Background:	SPRY4 is an inhibitor of the receptor-transduced mitogen-activated protein kinase (MAPK) signaling pathway. It is positioned upstream of RAS activation and impairs the formation of active GTP-RAS.
Synonyms:	Spry-4, Sprouty 4
Note:	Molecular weight: 32541 Da



[View online »](#)

Product images:**Dot Blot**

Dot blot analysis of anti-Phospho-SPRY4 pTyr75 Antibody (Cat.#AP12995PU-N) on nitrocellulose membrane. 50ng of Phospho-peptide or Non Phospho-peptide per dot were adsorbed. Antibody working concentrations are 0.5ug per ml.