

## Product datasheet for **AP12994PU-N**

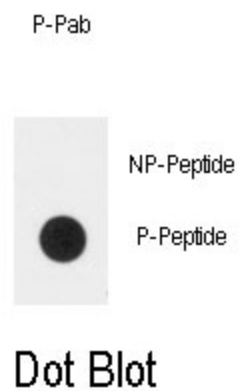
### Plexin D1 (PLXND1) pTyr1642 Rabbit Polyclonal Antibody

#### Product data:

Product Type:	Primary Antibodies
Recommended Dilution:	ELISA: 1/1,000. Dot Blot: 1/500.
Reactivity:	Human
Host:	Rabbit
Isotype:	Ig
Clonality:	Polyclonal
Immunogen:	This antibody is generated from rabbits immunized with a KLH conjugated synthetic phosphopeptide corresponding to amino acid residues surrounding Y1642 of human PLXND1.
Specificity:	This antibody detects PLXND1 pTyr1642.
Formulation:	PBS with 0.09% (W/V) Sodium Azide as preservative. State: Aff - Purified State: Liquid purified Ig fraction.
Concentration:	lot specific
Purification:	Protein A Chromatography followed by two-step phosphospecific peptide affinity purification.
Conjugation:	Unconjugated
Storage:	Store the antibody undiluted at 2-8°C for one month or (in aliquots) at -20°C for longer. Avoid repeated freezing and thawing.
Stability:	Shelf life: one year from despatch.
Gene Name:	plexin D1
Database Link:	<a href="#">Entrez Gene 23129 Human Q9Y4D7</a>
Background:	This protein belongs to calcium-dependent cell adhesion molecule family.
Synonyms:	Plexin-D1, Plexin D1, KIAA0620
Note:	<b>Molecular weight:</b> 212095 Da



[View online »](#)

**Product images:**

Dot blot analysis of anti-Phospho-PLXND1 pTyr1642 Antibody (Cat.#AP12994PU-N) on nitrocellulose membrane. 50ng of Phospho-peptide or Non Phospho-peptide per dot were adsorbed. Antibody working concentrations are 0.5ug per ml.