

Product datasheet for **AP12985PU-N**

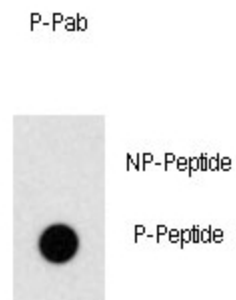
Plzf (ZBTB16) pTyr334 Rabbit Polyclonal Antibody

Product data:

Product Type:	Primary Antibodies
Recommended Dilution:	ELISA: 1/1,000. Dot Blot: 1/500.
Reactivity:	Human
Host:	Rabbit
Isotype:	Ig
Clonality:	Polyclonal
Immunogen:	This antibody is generated from rabbits immunized with a KLH conjugated synthetic phosphopeptide corresponding to amino acid residues surrounding Y334 of human ZBTB16.
Specificity:	This antibody detects ZBTB16 pTyr334.
Formulation:	PBS with 0.09% (W/V) Sodium Azide as preservative. State: Aff - Purified State: Liquid purified Ig fraction.
Concentration:	lot specific
Purification:	Protein A Chromatography followed by two-step phosphospecific peptide affinity purification.
Storage:	Store the antibody undiluted at 2-8°C for one month or (in aliquots) at -20°C for longer. Avoid repeated freezing and thawing.
Stability:	Shelf life: one year from despatch
Gene Name:	zinc finger and BTB domain containing 16
Database Link:	Entrez Gene 7704 Human
Background:	ZBTB16 is a member of the Krueppel C2H2-type zinc-finger protein family. It is a zinc finger transcription factor that contains nine Kruppel-type zinc finger domains at the carboxyl terminus. This protein is located in the nucleus, is involved in cell cycle progression, and interacts with a histone deacetylase.
Synonyms:	PLZF, ZNF145
Note:	Molecular weight: 74274 Da



[View online »](#)

Product images:

Dot blot analysis of anti-Phospho-ZBTB16 pTyr334 Antibody (Cat.#AP12985PU-N) on nitrocellulose membrane. 50ng of Phospho-peptide or Non Phospho-peptide per dot were adsorbed. Antibody working concentrations are 0.5ug per ml.

Dot Blot