

Product datasheet for **AP12983PU-N**

Prolactin (PRL) pSer163 Rabbit Polyclonal Antibody

Product data:

Product Type:	Primary Antibodies
Recommended Dilution:	ELISA: 1/1,000. Dot Blot: 1/500.
Reactivity:	Human
Host:	Rabbit
Isotype:	Ig
Clonality:	Polyclonal
Immunogen:	KLH conjugated synthetic phosphopeptide corresponding to amino acid residues surrounding Serine 163 of Human PRL.
Specificity:	This antibody detects PRL pSer163.
Formulation:	PBS with 0.09% (W/V) Sodium Azide as preservative. State: Aff - Purified State: Liquid purified Ig fraction
Concentration:	lot specific
Purification:	Protein A Chromatography followed by peptide affinity purification
Conjugation:	Unconjugated
Storage:	Store the antibody undiluted at 2-8°C for one month or (in aliquots) at -20°C for longer. Avoid repeated freezing and thawing.
Stability:	Shelf life: one year from despatch.
Gene Name:	prolactin
Database Link:	Entrez Gene 5617 Human P01236
Background:	Prolactin is a secreted protein with hormonal activity, which functions by binding to the prolactin receptor and positively regulating epithelial cell proliferation. Prolactin acts primarily on the mammary gland by promoting lactation, and has been shown to promote prostate epithelial cell proliferation. Prolactin may also facilitate decidual growth and placentation. Prolactin belongs to the somatotropin/prolactin family. Prolactin (PRL) acts primarily on the mammary gland by promoting lactation.

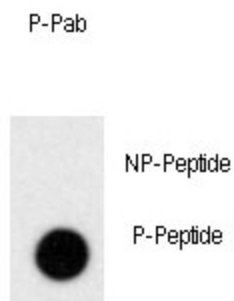


[View online »](#)

Synonyms: prolactin

Note: **Molecular weight:** 25876 Da

Product images:



Dot Blot

Dot blot analysis of anti-Phospho-PRL pSer163 Antibody (Cat.#AP12983PU-N) on nitrocellulose membrane. 50ng of Phospho-peptide or Non Phospho-peptide per dot were adsorbed. Antibody working concentrations are 0.5ug per ml.