

Product datasheet for **AP12974PU-N**

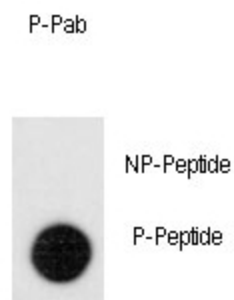
LEO1 pSer551 Rabbit Polyclonal Antibody

Product data:

Product Type:	Primary Antibodies
Recommended Dilution:	ELISA: 1/1,000. Dot Blot: 1/500.
Reactivity:	Human
Host:	Rabbit
Isotype:	Ig
Clonality:	Polyclonal
Immunogen:	This antibody is generated from rabbits immunized with a KLH conjugated synthetic phosphopeptide corresponding to amino acid residues surrounding S551 of human LEO1.
Specificity:	This antibody detects Leo1 pSer551.
Formulation:	PBS with 0.09% (W/V) Sodium Azide as preservative. State: Aff - Purified State: Liquid purified Ig fraction.
Concentration:	lot specific
Purification:	Protein A Chromatography followed by two-step phosphospecific peptide affinity purification.
Conjugation:	Unconjugated
Storage:	Store the antibody undiluted at 2-8°C for one month or (in aliquots) at -20°C for longer. Avoid repeated freezing and thawing.
Stability:	Shelf life: one year from despatch.
Gene Name:	LEO1 homolog, Paf1/RNA polymerase II complex component
Database Link:	Entrez Gene 123169 Human Q8WVCO
Background:	The PAF1 complex is a multifunctional complex. The PAF1 complex interacts with POLR2A. It may be involved in both initiation and elongation, histone methylation and RNA processing. Overexpression of LEO1 induces cell growth arrest and premature senescence of fibroblasts.
Synonyms:	LEO-1, RDL
Note:	Molecular weight: 75273 Da



[View online »](#)

Product images:

Dot blot analysis of anti-Phospho-Leo1 pSer551 Antibody (Cat.#AP12974PU-N) on nitrocellulose membrane. 50ng of Phospho-peptide or Non Phospho-peptide per dot were adsorbed. Antibody working concentrations are 0.5ug per ml.

Dot Blot