

## Product datasheet for **AP12972PU-N**

### GFAP pSer8 Rabbit Polyclonal Antibody

#### Product data:

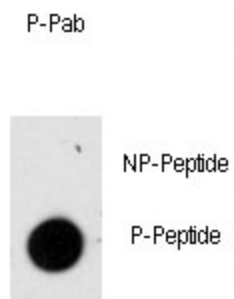
Product Type:	Primary Antibodies
Recommended Dilution:	ELISA: 1/1,000. Dot Blot: 1/500.
Reactivity:	Human
Host:	Rabbit
Isotype:	Ig
Clonality:	Polyclonal
Immunogen:	This antibody is generated from rabbits immunized with a KLH conjugated synthetic peptide selected from the C-terminal region of human Phospho-GFAP-Ser8.
Specificity:	This antibody detects GFAP pSer8.
Formulation:	PBS with 0.09% (W/V) Sodium Azide as preservative. State: Aff - Purified State: Liquid purified Ig fraction.
Concentration:	lot specific
Purification:	Protein A Chromatography followed by two-step phosphospecific peptide affinity purification.
Conjugation:	Unconjugated
Storage:	Store the antibody undiluted at 2-8°C for one month or (in aliquots) at -20°C for longer. Avoid repeated freezing and thawing.
Stability:	Shelf life: one year from despatch.
Gene Name:	glial fibrillary acidic protein
Database Link:	<a href="#">Entrez Gene 2670 Human P14136</a>
Background:	GFAP is one of the major intermediate filament proteins of mature astrocytes. It is used as a marker to distinguish astrocytes from other glial cells during development. Mutations in this gene cause Alexander disease, a rare disorder of astrocytes in the central nervous system.
Synonyms:	Glial Fibrillary Acidic Protein
Note:	<b>Molecular weight:</b> 49880 Da



[View online »](#)

Protein Families: ES Cell Differentiation/IPS

### Product images:



Dot Blot

Dot blot analysis of anti-Phospho-GFAP pSer8 Antibody (Cat.#AP12972PU-N) on nitrocellulose membrane. 50ng of Phospho-peptide or Non Phospho-peptide per dot were adsorbed. Antibody working concentrations are 0.5ug per ml.