

Product datasheet for **AP12968PU-N**

Myelin Basic Protein (MBP) pTyr203 Rabbit Polyclonal Antibody

Product data:

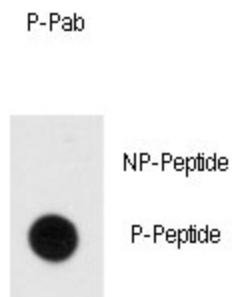
Product Type:	Primary Antibodies
Recommended Dilution:	ELISA: 1/1,000. Dot Blot: 1/500.
Reactivity:	Human
Host:	Rabbit
Isotype:	Ig
Clonality:	Polyclonal
Immunogen:	This antibody is generated from rabbits immunized with a KLH conjugated synthetic phosphopeptide corresponding to amino acid residues surrounding Y203 of human MBP.
Specificity:	This antibody detects Myelin Basic Protein (MBP) pTyr203.
Formulation:	PBS with 0.09% (W/V) Sodium Azide as preservative. State: Aff - Purified State: Liquid purified Ig fraction.
Concentration:	lot specific
Purification:	Protein A Chromatography followed by two-step phosphospecific peptide affinity purification.
Conjugation:	Unconjugated
Storage:	Store the antibody undiluted at 2-8°C for one month or (in aliquots) at -20°C for longer. Avoid repeated freezing and thawing.
Stability:	Shelf life: one year from despatch.
Gene Name:	myelin basic protein
Database Link:	Entrez Gene 4155 Human P02686
Background:	Myelin basic protein (MBP) is a protein believed to be important in the process of myelination of nerves in the central nervous system (CNS). The pool of MBP in the central nervous system is very diverse, with several splice variants being expressed and a large number of post-translational modifications on the protein, which include phosphorylation, methylation, deamidation and citrullination.
Synonyms:	MBP



[View online »](#)

Note: **Molecular weight:** 33117 Da

Product images:



Dot blot analysis of anti-Phospho-MBP pTyr203 Antibody (Cat.#AP12968PU-N) on nitrocellulose membrane. 50ng of Phospho-peptide or Non Phospho-peptide per dot were adsorbed. Antibody working concentrations are 0.5ug per ml.

Dot Blot