

## Product datasheet for **AP12965PU-N**

### **GIT1 pTyr554 Rabbit Polyclonal Antibody**

#### **Product data:**

<b>Product Type:</b>	Primary Antibodies
<b>Recommended Dilution:</b>	ELISA: 1/1,000. Dot Blot: 1/500.
<b>Reactivity:</b>	Human
<b>Host:</b>	Rabbit
<b>Isotype:</b>	Ig
<b>Clonality:</b>	Polyclonal
<b>Immunogen:</b>	This antibody is generated from rabbits immunized with a KLH conjugated synthetic phosphopeptide corresponding to amino acid residues surrounding S554 of human GIT1.
<b>Specificity:</b>	This antibody detects GIT1 pTyr554. Predicted to cross react with Mouse (100% Antigen Homology).
<b>Formulation:</b>	PBS with 0.09% (W/V) Sodium Azide as preservative. State: Aff - Purified State: Liquid purified Ig fraction.
<b>Concentration:</b>	lot specific
<b>Purification:</b>	Protein A Chromatography followed by two-step phosphospecific peptide affinity purification.
<b>Conjugation:</b>	Unconjugated
<b>Storage:</b>	Store the antibody undiluted at 2-8°C for one month or (in aliquots) at -20°C for longer. Avoid repeated freezing and thawing.
<b>Stability:</b>	Shelf life: one year from despatch.
<b>Gene Name:</b>	GIT ArfGAP 1
<b>Database Link:</b>	<a href="#">Entrez Gene 28964 Human Q9Y2X7</a>



[View online »](#)

**Background:**

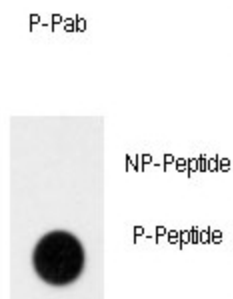
GIT1 is a GTPase-activating protein for the ADP ribosylation factor family. It may serve as a scaffold to bring together molecules to form signaling modules controlling vesicle trafficking, adhesion and cytoskeletal organization, increases the speed of cell migration, as well as the size and rate of formation of protrusions, possibly by targeting PAK1 to adhesions and the leading edge of lamellipodia. It sequesters inactive non-tyrosine-phosphorylated paxillin in cytoplasmic complexes.

**Synonyms:**

GRK-interacting protein 1, CAT1

**Note:**

**Molecular weight:** 84341 Da

**Product images:**

Dot blot analysis of anti-Phospho-GIT1 pTyr554 Antibody (Cat.#AP12965PU-N) on nitrocellulose membrane. 50ng of Phospho-peptide or Non Phospho-peptide per dot were adsorbed. Antibody working concentrations are 0.5ug per ml.

Dot Blot