

Product datasheet for **AP12953PU-N**

SLAMF1 pTyr281 Rabbit Polyclonal Antibody

Product data:

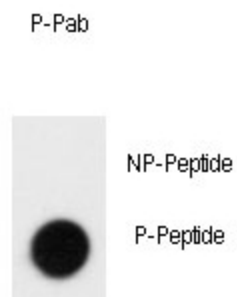
Product Type:	Primary Antibodies
Recommended Dilution:	ELISA: 1/1,000. Dot Blot: 1/500.
Reactivity:	Human
Host:	Rabbit
Isotype:	Ig
Clonality:	Polyclonal
Immunogen:	This antibody is generated from rabbits immunized with a KLH conjugated synthetic phosphopeptide corresponding to amino acid residues surrounding Y281 of human SLAMF1.
Specificity:	This antibody detects SLAMF1/CD150 pTyr281.
Formulation:	PBS with 0.09% (W/V) Sodium Azide as preservative. State: Aff - Purified State: Liquid purified Ig fraction.
Concentration:	lot specific
Purification:	Protein A Chromatography followed by two-step phosphospecific peptide affinity purification.
Conjugation:	Unconjugated
Storage:	Store the antibody undiluted at 2-8°C for one month or (in aliquots) at -20°C for longer. Avoid repeated freezing and thawing.
Stability:	Shelf life: one year from despatch.
Gene Name:	signaling lymphocytic activation molecule family member 1
Database Link:	Entrez Gene 6504 Human Q13291
Background:	SLAMF1 is a high-affinity self-ligand important in bidirectional T-cell to B-cell stimulation. SLAM-induced signal-transduction events in T-lymphocytes are different from those in B-cells. Two modes of SLAM signaling are likely to exist: one in which the inhibitor SH2D1A acts as a negative regulator and another in which protein-tyrosine phosphatase 2C (PTPN11)-dependent signal transduction operates.
Synonyms:	Slam, CDw150, Ipo-3



[View online »](#)

Note: **Molecular weight:** 37231 Da

Product images:



Dot Blot

Dot blot analysis of anti-Phospho-SLAMF1 pTyr281 Antibody (Cat.#AP12953PU-N) on nitrocellulose membrane. 50ng of Phospho-peptide or Non Phospho-peptide per dot were adsorbed. Antibody working concentrations are 0.5ug per ml.