

Product datasheet for **AP12922PU-N**

EGFR pTyr1016 Rabbit Polyclonal Antibody

Product data:

Product Type:	Primary Antibodies
Recommended Dilution:	ELISA: 1/1,000. Dot Blot: 1/500.
Reactivity:	Human
Host:	Rabbit
Isotype:	Ig
Clonality:	Polyclonal
Immunogen:	This antibody is generated from rabbits immunized with a KLH conjugated synthetic phosphopeptide corresponding to amino acid residues surrounding Y1016 of human EGFR.
Specificity:	This antibody detects EGFR pTyr1016. Predicted to cross react with Mouse (100% Antigen Homology).
Formulation:	PBS with 0.09% (W/V) Sodium Azide as preservative. State: Aff - Purified State: Liquid purified Ig fraction.
Concentration:	lot specific
Purification:	Protein A Chromatography followed by two-step phosphospecific peptide affinity purification.
Conjugation:	Unconjugated
Storage:	Store the antibody undiluted at 2-8°C for one month or (in aliquots) at -20°C for longer. Avoid repeated freezing and thawing.
Stability:	Shelf life: one year from despatch.
Gene Name:	epidermal growth factor receptor
Database Link:	Entrez Gene 1956 Human P00533



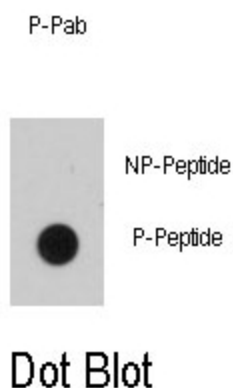
[View online »](#)

Background: Epidermal Growth factor receptor (EGFR) is the prototype member of the type 1 receptor tyrosine kinases. EGFR overexpression in tumors indicates poor prognosis and is observed in tumors of the head and neck, brain, bladder, stomach, breast, lung, endometrium, cervix, vulva, ovary, esophagus, stomach and in squamous cell carcinoma. EGFR is a receptor for EGF, but also for other members of the EGF family, including TGF- α , amphiregulin, betacellulin, heparin-binding EGF-like growth factor, GP30 and vaccinia virus growth factor. It is involved in the control of cell growth and differentiation.

Synonyms: Epidermal growth factor receptor, EGF Receptor, erbB-1, c-ErbB-1

Note: **Molecular weight:** 134277 Da

Product images:



Dot blot analysis of anti-EGFR B1 Phospho-specific Pab (Cat.#AP12922PU-N) on nitrocellulose membrane. 50ng of Phospho-peptide or Non Phospho-peptide per dot were adsorbed. Antibody working concentrations are 0.5ug per ml.