

## Product datasheet for **AP12877PU-N**

### **RSK1 p90 (RPS6KA1) pSer363 Rabbit Polyclonal Antibody**

#### **Product data:**

<b>Product Type:</b>	Primary Antibodies
<b>Recommended Dilution:</b>	ELISA: 1/1,000. Dot Blot: 1/500.
<b>Reactivity:</b>	Human
<b>Host:</b>	Rabbit
<b>Isotype:</b>	Ig
<b>Clonality:</b>	Polyclonal
<b>Immunogen:</b>	This antibody is generated from rabbits immunized with a KLH conjugated synthetic phosphopeptide corresponding to amino acid residues surrounding S363 of human RPS6KA1.
<b>Specificity:</b>	This antibody detects RPS6KA1 pSer363.
<b>Formulation:</b>	PBS with 0.09% (W/V) Sodium Azide as preservative. State: Aff - Purified State: Liquid purified Ig fraction.
<b>Concentration:</b>	lot specific
<b>Purification:</b>	Affinity purification in a 2-step procedure with the control and phosphorylated peptides. The phospho-specific antibody is eluted with high and low pH buffers and neutralized immediately, followed by dialysis against PBS.
<b>Conjugation:</b>	Unconjugated
<b>Storage:</b>	Store the antibody undiluted at 2-8°C for one month or (in aliquots) at -20°C for longer. Avoid repeated freezing and thawing.
<b>Stability:</b>	Shelf life: one year from despatch.
<b>Gene Name:</b>	ribosomal protein S6 kinase A1
<b>Database Link:</b>	<a href="#">Entrez Gene 6195 Human Q15418</a>



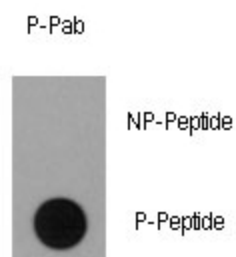
[View online »](#)

**Background:** RSK1 is a member of the RSK (ribosomal S6 kinase) family of serine/threonine kinases. This kinase contains 2 nonidentical kinase catalytic domains and phosphorylates various substrates, including members of the mitogen-activated kinase (MAPK) signalling pathway. The activity of this protein has been implicated in controlling cell growth and differentiation.

**Synonyms:** Ribosomal S6 kinase 1, 90 kDa ribosomal protein S6 kinase 1, MAPKAPK1A, RSK1, RSK-1, p90RSK1

**Note:** **Molecular weight:** 82723 Da

### Product images:



Dot blot analysis of anti-RPS6KA1-pSer363 Phospho-specific Pab (Cat#AP12877PU-N) on nitrocellulose membrane. 50ng of Phospho-peptide or Non Phospho-peptide per dot were adsorbed. Antibody working concentrations are 0.5ug per ml.

Dot Blot