

## Product datasheet for **AP12862PU-N**

### RAF1 pSer259 Rabbit Polyclonal Antibody

#### Product data:

Product Type:	Primary Antibodies
Recommended Dilution:	ELISA: 1/1,000. Dot Blot: 1/500.
Reactivity:	Human
Host:	Rabbit
Isotype:	Ig
Clonality:	Polyclonal
Immunogen:	This antibody is generated from rabbits immunized with a KLH conjugated synthetic phosphopeptide corresponding to amino acid residues surrounding Ser259 of human RAF1.
Specificity:	This antibody detects RAF1 pSer259.
Formulation:	PBS with 0.09% (W/V) Sodium Azide as preservative. State: Aff - Purified State: Liquid purified Ig fraction.
Concentration:	lot specific
Purification:	Affinity purification in a 2-step procedure with the control and phosphorylated peptides. The phospho-specific antibody is eluted with high and low pH buffers and neutralized immediately, followed by dialysis against PBS.
Conjugation:	Unconjugated
Storage:	Store the antibody undiluted at 2-8°C for one month or (in aliquots) at -20°C for longer. Avoid repeated freezing and thawing.
Stability:	Shelf life: one year from despatch.
Gene Name:	Raf-1 proto-oncogene, serine/threonine kinase
Database Link:	<a href="#">Entrez Gene 5894 Human P04049</a>



[View online »](#)

**Background:**

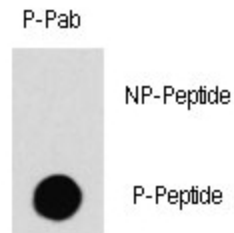
Raf-1 is a MAP kinase kinase kinase (MAP3K) which functions downstream of the Ras family of membrane associated GTPases to which it binds directly. Once activated Raf-1 can phosphorylate to activate the dual specificity protein kinases MEK1 and MEK2 which in turn phosphorylate to activate the serine/threonine specific protein kinases ERK1 and ERK2. Activated ERKs are pleiotropic effectors of cell physiology and play an important role in the control of gene expression involved in the cell division cycle, apoptosis, cell differentiation and cell migration.

**Synonyms:**

C-RAF, Raf-1, cRaf

**Note:**

**Molecular weight:** 73052 Da

**Product images:**

Dot Blot

Dot blot analysis of anti-RAF1-pSer259 Phospho-specific Pab (Cat#AP12862PU-N) on nitrocellulose membrane. 50ng of Phospho-peptide or Non Phospho-peptide per dot were adsorbed. Antibody working concentrations are 0.5ug per ml.